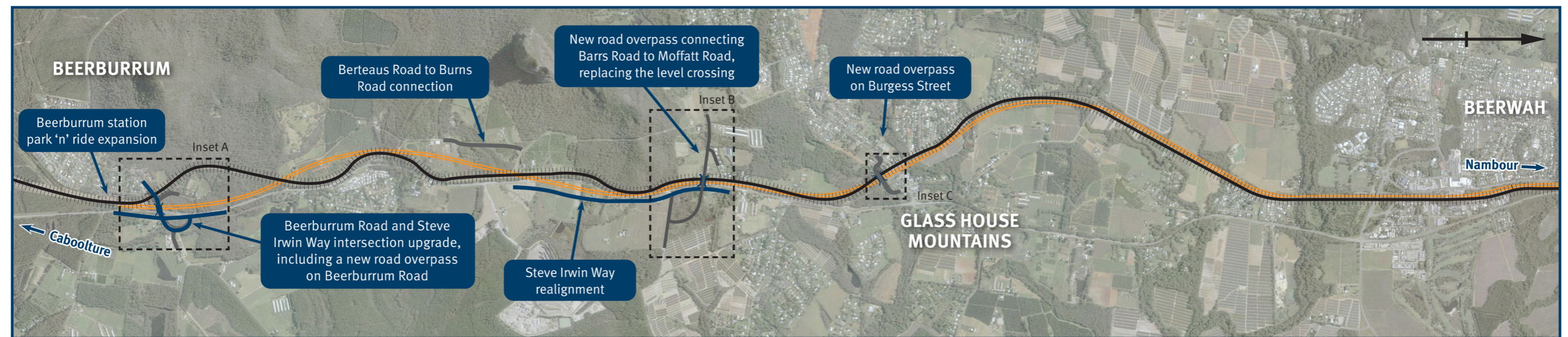
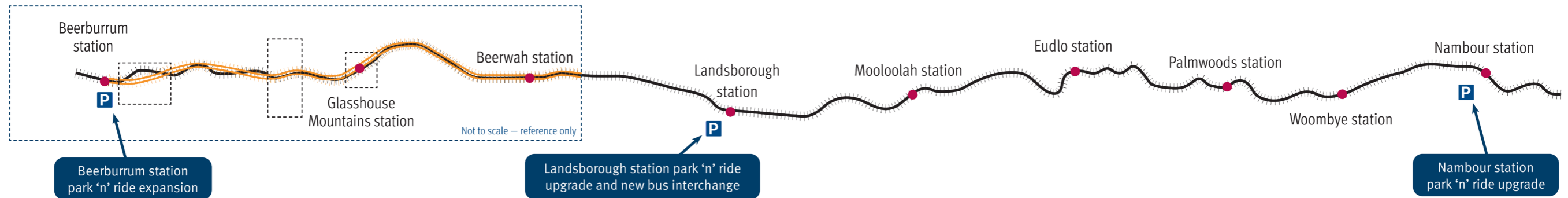


# Beerburrum to Nambour Rail Upgrade – Stage 1

Updated concept layout | February 2021



**Inset A**  
Beerburrum Road and Steve Irwin Way intersection upgrade



**Inset B**  
Barrs Road to Moffatt Road overpass



**Inset C**  
Burgess Street overpass



**Legend**

- Existing rail line
- New rail line
- Main road
- Local road connection
- Earthworks



Australian Government

**BUILDING OUR FUTURE**



Queensland Government