

Structure Condition Inspection Report

B2/1

Sheet

1 Of 7

Structure Id 7976

Name A.J. Bond Bridge

Crossing Name Gilbert River

Alt. Name _____

Structure Type Bridge

Owner MR DEPARTMENT OF MAIN RO

Construction Type Girder/Beam

District 403 Far North

Construction Material Steel

LGA Id 226 ETHERIDGE SHIRE COUNC

Inspector Roy West

Date 01-OCT-2009

Inspection Level 2 Programmed

Undersize Components

Level 3 Exceptional

Underwater

Road Section

Start

End

TDist

Id	Description	S	Cway	S	RPC	Dist	RPC	Dist	Start	End
92B	CROYDON - GEORG C	1	C	4	0.000	4	0.209	73.210	73.419	

Overall Ratings

1 2 3 4 5 Comments

Original Structure (O)			X			
------------------------	--	--	---	--	--	--

In reference to the original design drawings for the Gilbert River Bridge job plan # 57822 & 57824 the chainage have been marked wrong so ABUT A is ABUT B. All piers from 1 to 11 have been sand blasted by moving river sand leaving the surface water worn. All steel girders have been sand blasted back to bare metal nil rust appearing but girders should be painted. Cracks along joint at bottom of girders over Piers require monitoring periodically for further cracking or sealed.. Both wing walls on Abutment B require to be patched & sealed.

Widening (WLn, WRn), Lengthening (L1, L2), Raised (Ra), Redecked (Re), Shortening (S1, S2), Strengthening (St)

Released under RMA

Structure Condition Inspection Report

B2/2

Sheet

2 Of 7

Structure Id 7976

Name A.J. Bond Bridge

Inspection Date 01-OCT-2009

Inspection Level 2 Level 3 Underwater

Component Location				Exposure Class	Quantity	Unit	Quantity Per Condition State				Maintenance Req'd	Comments * Location of item/condition * Description of defects by location type, magnitude, extent * References of sketches and photos (Roll/Exposure Nos)
Modification	Group	Component	Standard				1	2	3	4		
O	AP1	AP	70O	2	1.0	EACH		1.0				Photo 09_01
O	AP1	GR	72S	2	2.0	EACH			2.0			
Approach guard rail photo 09_02. Side 1 is damaged with bent post photos 09_03 & 09_08. Side 2 is damaged with bent spaces & one space is missing photo 09_05 & 09_06												
O	AP1	PRO	53O	2	40.0	M2		40.0				Photo 09_07
O	A1	J1	15O	2	3.4	LINM		3.4				Rough transition to span 1 photo 09_09
O	S1	WS	1O	2	38.0	M2		38.0				Photo 09_12
O	S1	K	3C	2	22.4	LINM		22.0	0.4			Showing kerbs over all spans side 1 & 2 photos 09_10 & 09_11 & 09_38
O	P1	J1	14S	2	3.4	LINM			3.4			Steel joint plate has been removed photo 09_13
O	S2	WS	1C	2	62.2	M2		62.2				Photo 09_15
O	S2	K	3C	2	36.4	LINM		36.4				Photo's 09_10 & 09_11 taken from span 1
O	S3	WS	1C	2	61.8	M2		61.8				Photo 09_17
O	S3	K	3C	2	36.4	LINM		36.4				Photo's 09_10 & 09_11 side 1 and side 2 taken from Span 1
O	P3	J1	14S	2	3.4	LINM			3.4			Existing steel plate has been removed photo 09_14
O	P3	J2	14S	2	3.4	LINM			3.4			Existing steel plate has been removed, photo 09_18
O	S4	WS	1C	2	62.2	M2		62.2				Photo 09_20
O	S4	K	3C	2	36.6	LINM		36.6				Photos 09_10 & 09_11 side 1 & side 2 taken from Span 1
O	S5	WS	1C	2	62.2	M2		62.2				Photo 09_21
O	S5	K	3C	2	36.6	LINM		36.6				Photos 09_10 & 09_11 side 1 and side 2 taken from Span 1
O	P5	J1	14S	2	3.4	LINM			3.4			Existing steel plate has been removed photo 09_19
O	P5	J2	14S	2	3.4	LINM			3.4			Existing steel plate has been removed photo 09_22
O	S6	WS	1C	2	63.2	M2		63.2				Photo 09_24
O	S6	K	3C	2	37.2	LINM		37.2				Photos 09_10 & 09_11 side 1 & side 2 taken from Span 1
O	S7	WS	1C	2	61.2	M2		61.2				Photo 09_25
O	S7	K	3C	2	36.0	LINM		36.0				Photo 09_10 & 09_11 side 1 & side 2 taken from Span 1
O	P7	J1	14S	2	3.4	LINM			3.4			Existing steel plate has been removed photo 09_23
O	P7	J2	14S	2	3.4	LINM			3.4			Existing steel plate has been removed photo 09_26
O	S8	WS	1C	2	61.8	M2		61.8				Photo 09_28
O	S8	K	3C	2	36.4	LINM		36.4				Photos 09_10 & 09_11 side 1 & side 2 taken from Span 1
O	S9	WS	1C	2	63.0	M2		63.0				Photo 09_29

Structure Condition Inspection Report

B2/2

Sheet

3 Of 7

Structure Id 7976

Name A.J. Bond Bridge

Inspection Date 01-OCT-2009

Inspection Level 2 Level 3 Underwater

Component Location				Exposure Class	Quantity	Unit	Quantity Per Condition State				Maintenance Req'd	Comments * Location of item/condition * Description of defects by location type, magnitude, extent * References of sketches and photos (Roll/Exposure Nos)
Modification	Group	Component	Standard				1	2	3	4		
O	S9	K	3C	2	37.0	LINM		37.0				Photo 09_10 & 09_11 side 1 & side 2 taken from Span 1
O	P9	J1	14S	2	3.4	LINM			3.4			Existing steel plate has been removed photo 09_27
O	P9	J2	14S	2	3.4	LINM			3.4			Existing steel plate has been removed photo 09_30
O	S10	WS	1C	2	61.6	M2		61.6				Photo 09_32
O	S10	K	3C	2	36.2	LINM		36.2				Photo 09_10 & 09_11 side 1 & side 2 taken from Span 1
O	S11	WS	1C	2	61.8	M2		61.8				
Photo 09_35 NOTE: 10m2 of surface has exposed reo. Photo 09_33 & 09_34. Sketch 09_14												
O	S11	K	3C	2	36.4	LINM		36.4				Photo 09_10 & 09_11 side 1 & side 2 taken from Span 1
O	P11	J1	14S	2	3.4	LINM			3.4			Existing steel plate has been removed photo 09_31
O	S12	WS	1C	2	53.0	M2		53.0				Photo 09_37
O	S12	K	3C	2	31.2	LINM		31.2				Photo 09_10 & 09_11 side 1 & side 2 taken from Span 1
O	A2	J1	15O	2	3.4	LINM		3.4				Photo 09_39
O	AP2	PRO	53O	2	80.0	M2		80.0				Photo 09_44
O	AP2	GR	72S	2	2.0	EACH		2.0				Nil guardrail, nil guide post as from last report 27-APR-2005. Approach to A2-A has been reconstructed photo 09_41.
O	AP2	AP	70O	2	1.0	EACH		1.0				Photo 09_40
O	A1	P	56C	2	8.0	EACH	X	X	X	X		Buried sketch 09_01 photo 09_46
O	A1	CAP	59C	2	1.0	EACH	X	X	X	X		Buried sketch 09_01 photo 09_46
O	A1	A	50C	2	1.0	EACH	X	X	X	X		Buried sketch 09_01 photo 09_46
O	A1	B	40O	2	2.0	EACH	X	X	X	X		Unable to inspect encased in concrete photo 09_46
O	A1	WW	51C	2	2.0	EACH	X	X	X	X		Buried by silt unable to inspect photo's 09_47 & 09_48 and sketch 09_01
O	S1	D	20C	2	44.0	M2		44.0				Photo 09_46
O	S1	G	22S	2	2.0	EACH			2.0			Loss of paint protection requires painting photo 09_58.
O	S1	XG	32C	2	2.0	EACH		2.0				Photo 09_51
O	S1	W	71O	2	1.0	EACH		1.0				Photos 09_55 & 09_56
O	P1	P	56C	2	2.0	EACH	X	X	X	X		Buried under sand sketch 09_02 & photo 09_78
O	P1	PW	58C	2	17.4	M2		17.4				Photo 09_52 & sketch 09_02
O	P1	B	40O	2	2.0	EACH	X	X	X	X		Unable to inspect encased in concrete photo 09_57
O	S2	D	20C	2	80.0	M2		80.0				
O	S2	G	22S	2	2.0	EACH			2.0			

Expansion hinge cover plate stub bolts have been replaced from last inspection 27-4-05, photo 09_53 Loss of paint protection requires painting photo 09_58

Structure Condition Inspection Report

B2/2

Sheet

4 Of 7

Structure Id 7976

Name A.J. Bond Bridge

Inspection Date 01-OCT-2009

Inspection Level 2 Level 3 Underwater

Component Location				Exposure Class	Quantity	Unit	Quantity Per Condition State				Maintenance Req'd	Comments * Location of item/condition * Description of defects by location type, magnitude, extent * References of sketches and photos (Roll/Exposure Nos)
Modification	Group	Component	Standard				1	2	3	4		
O	S2	XG	31C	2	2.0	EACH		2.0				Photo 09_73
O	S2	XG	32C	2	1.0	EACH		1.0				Photo 09_54
O	S2	W	71O	2	1.0	EACH		1.0				Photo 09_55 & 09_56
O	P2	P	56C	2	2.0	EACH	X	X	X	X		Buried under sand, sketch 09_03 & photo 09_78. This is typical of all.
O	P2	PW	58C	2	27.4	M2			27.4			Severe crack along CJ between bottom of XG-32C & top of PW pour, refer sketch 09_03
O	P2	B	40O	2	2.0	EACH	X	X	X	X		Unable to inspect encased by concrete photo 09_57. this is typical of all.
O	S3	D	20C	2	80.0	M2		80.0				
O	S3	G	22S	2	2.0	EACH			2.0			Loss of paint protection requires painting photo 09_58. This photo refers to all girders
O	S3	XG	31C	2	2.0	EACH		2.0				Photo 09_97 XG has been patched since last inspection 27-4-05
O	S3	XG	32C	2	1.0	EACH		1.0				Photo 09_59
O	S3	W	71O	2	1.0	EACH		1.0				Photo 09_55 & 09_56
O	P3	P	56C	2	2.0	EACH	X	X	X	X		Buried under sand sketch 09_04 & photo 09_78. this is typical of all.
O	P3	PW	58C	2	27.4	M2			27.4			
Severe crack along CJ between bottom of XG-32C & top of PW pour. Vertical crack appearing at bottom of girders photo 09_60 - 09_62 & refer sketch 09_04 and comments.												
O	P3	B	40O	2	2.0	EACH	X	X	X	X		Unable to inspect encased by concrete
O	S4	D	20C	2	80.0	M2		80.0				
O	S4	G	22S	2	2.0	EACH			2.0			Loss of paint protection requires painting photo 09_58. 5x stub bolts missing from fixed hinge cover plate
O	S4	XG	31C	2	6.0	EACH		6.0				Photo 09_72 XG have been patched since last inspection 27-4-05
O	S4	XG	32C	2	1.0	EACH		1.0				
O	S4	W	71O	2	1.0	EACH		1.0				Photo 09_55 & 09_56
O	P4	P	56C	2	2.0	EACH	X	X	X	X		Buried under sand sketch 09_05 & photo 09_78. this is typical of all.
O	P4	PW	58C	2	27.4	M2			27.4			Severe crack along CJ at bottom of XG-32C and top of PW. Also spall/exposed reo at base of PW refer sketch 09_05 and comments
O	P4	B	40O	2	2.0	EACH	X	X	X	X		Unable to inspect encased in concrete photo 09_57. this is typical of all.
O	S5	D	20C	2	80.0	M2		80.0				
O	S5	G	22S	2	2.0	EACH			2.0			Loss of paint protection requires painting photo 09_58
O	S5	XG	31C	2	2.0	EACH		2.0				XG have been patched since last inspection 27-4-05 photo 09_69
O	S5	XG	32C	2	1.0	EACH		1.0				
O	S5	W	71O	2	1.0	EACH		1.0				Photo 09_55 & 09_56
O	P5	P	56C	2	2.0	EACH	X	X	X	X		Buried under sand, photo 09_78, this is typical of all.

Structure Condition Inspection Report

B2/2

Sheet

5 Of 7

Structure Id 7976

Name A.J. Bond Bridge

Inspection Date 01-OCT-2009

Inspection Level 2 Level 3 Underwater

Component Location				Exposure Class	Quantity	Unit	Quantity Per Condition State				Maintenance Req'd	Comments * Location of item/condition * Description of defects by location type, magnitude, extent * References of sketches and photos (Roll/Exposure Nos)
Modification	Group	Component	Standard				1	2	3	4		
O	P5	PW	58C	2	27.4	M2			27.4			Severe crack along CJ at bottom of XG-32C and top of PW refer sketch 09_06
O	P5	B	40O	2	2.0	EACH	X	X	X	X		Unable to inspect encased by concrete, photo 09_57, this is typical of all.
O	S6	D	20C	2	80.0	M2		80.0				
O	S6	G	22S	2	2.0	EACH			2.0			
Loss of paint protection requires painting. photo 09_58. Fixed hinge cover plate missing G2 side 2 fixed hinge cover plate on side 1 needs removal and debris removed photo 09_70 and 09_71												
O	S6	XG	31C	2	6.0	EACH		6.0				XG has been patched since last inspection 27-04-05
O	S6	XG	32C	2	1.0	EACH		1.0				
O	S6	W	71O	2	1.0	EACH		1.0				Photos 09_55 & 09_56
O	P6	P	56C	2	2.0	EACH	X	X	X	X		Buried under sand, photo 09_78, this is typical of all.
O	P6	PW	58C	2	27.4	M2			27.4			Severe crack along CJ at bottom of XG and top of PW refer sketch 09_07
O	P6	B	40O	2	2.0	EACH	X	X	X	X		Unable to inspect encased in concrete, photo 09_57, this is typical of all.
O	S7	D	20C	2	80.0	M2		80.0				
O	S7	G	22S	2	2.0	EACH			2.0			Loss of paint protection requires painting photo 09_58
O	S7	XG	31C	2	2.0	EACH		2.0				
O	S7	XG	32C	2	1.0	EACH		1.0				
O	S7	W	71O	2	1.0	EACH		1.0				Photo 09_55 & 09_56
O	P7	P	56C	2	2.0	EACH	X	X	X	X		Buried by sand, photo 09_78, this is typical of all,
O	P7	PW	58C	2	27.4	M2			27.4			Crack along CJ refer sketch 09_08
O	P7	B	40O	2	2.0	EACH	X	X	X	X		Unable to inspect encased by concrete, photo 09_57, this is typical of all.
O	S8	D	20C	2	80.0	M2		80.0				
O	S8	G	22S	2	2.0	EACH			2.0			Loss of paint protection requires painting photo 09_58
O	S8	XG	31C	2	6.0	EACH		6.0				XG have been patched since last inspection 27-4-05 photo 09_72
O	S8	XG	32C	2	1.0	EACH		1.0				
O	S8	W	71O	2	1.0	EACH		1.0				Photo 09_55 & 09_56
O	P8	P	56C	2	2.0	EACH	X	X	X	X		Buried under sand, photo 09_78, this is typical of all.
O	P8	PW	58C	2	27.4	M2			27.4			Crack along CJ refer sketch 09_09
O	P8	B	40O	2	2.0	EACH	X	X	X	X		Unable to inspect encased by concrete, photo 09_57, this is typical of all.
O	S9	D	20C	2	80.0	M2		80.0				
O	S9	G	22S	2	2.0	EACH			2.0			Loss of paint protection requires painting photo 09_58

Structure Condition Inspection Report

B2/2

Sheet

6 Of 7

Structure Id 7976

Name A.J. Bond Bridge

Inspection Date 01-OCT-2009

Inspection Level 2 Level 3 Underwater

Component Location				Exposure Class	Quantity	Unit	Quantity Per Condition State				Maintenance Req'd	Comments * Location of item/condition * Description of defects by location type, magnitude, extent * References of sketches and photos (Roll/Exposure Nos)
Modification	Group	Component	Standard				1	2	3	4		
O	S9	XG	31C	2	2.0	EACH		2.0				
O	S9	XG	32C	2	1.0	EACH		1.0				
O	S9	W	71O	2	1.0	EACH		1.0				Photo 09_55 & 09_56
O	P9	P	56C	2	2.0	EACH	X	X	X	X		Buried under sand, photo 09_78, this is typical of all.
O	P9	PW	58C	2	27.4	M2			27.4			Cracks appearing along CJ, refer comments and sketch 09_10
O	P9	B	40O	2	2.0	EACH	X	X	X	X		Unable to inspect encased in concrete, photo 09_57, this is typical of all.
O	S10	D	20C	2	80.0	M2		80.0				
O	S10	G	22S	2	2.0	EACH			2.0			Loss of paint protection requires pointing photo 09_58
O	S10	XG	31C	2	6.0	EACH		6.0				XG have been patch since last inspection
O	S10	XG	32C	2	1.0	EACH		1.0				
O	S10	W	71O	2	1.0	EACH		1.0				Photos 09_55 & 09_56
O	P10	P	56C	2	2.0	EACH	X	X	X	X		Buried under sand, photo 09_78, this typical of all.
O	P10	PW	58C	2	27.4	M2			27.4			Severe crack on upstream side 2 refer sketch 09_11
O	P10	B	40O	2	2.0	EACH	X	X	X	X		Unable to inspect encased by concrete, photo 09_57, this is typical of all.
O	S11	D	20C	2	80.0	M2		80.0				
O	S11	G	22S	2	2.0	EACH			2.0			Loss of paint protection requires pointing photo 09_58
O	S11	XG	31C	2	2.0	EACH		2.0				XG has been patched since last inspection 27-4-05
O	S11	XG	32C	2	1.0	EACH		1.0				
O	S11	W	71O	2	1.0	EACH		1.0				Photo 09_55 & 09_56
O	P11	P	56C	2	2.0	EACH	X	X	X	X		Buried under sand, photo 09_78. this typical of all.
O	P11	PW	58C	2	27.4	M2			27.4			Cracking along C.J. Refer comments and sketch 09_12
O	P11	B	40O	2	2.0	EACH	X	X	X	X		Unable to inspect encased by concrete, photo 09_57, this is typical of all.
O	S12	D	20C	2	60.0	M2		60.0				
O	S12	G	22S	2	2.0	EACH			2.0			Loss of paint protection requires painting photo 09_58.
O	S12	XG	31C	2	3.0	EACH		3.0				
O	S12	XG	32C	2	1.0	EACH		1.0				
O	S12	W	71O	2	1.0	EACH		1.0				Photos 09_55 & 09_56
O	A2	F	59C	2	1.0	EACH	X	X	X	X		Buried under sand, photo 09_75.
O	A2	A	50C	2	1.0	EACH		1.0				Slight spalling of patched areas Photos 09_67 & 09_68.

Structure Condition Inspection Report

B2/2

Sheet

7 Of 7

Structure Id 7976

Name A.J. Bond Bridge

Inspection Date 01-OCT-2009

Inspection Level 2 Level 3 Underwater

Component Location				Exposure Class	Quantity	Unit	Quantity Per Condition State				Maintenance Req'd	Comments
Modification	Group	Component	Standard				1	2	3	4		
O	A2	B	40O	2	2.0	EACH	X	X	X	X		Unable to inspect encased in concrete, photo 09_75.
O	A2	WW	51C	2	2.0	EACH			2.0			Both wing walls have severe cracks photos 09_65 and 09_66, see sketch 09_13

Released under RTI - DMR

Structure Id <u>7976</u>	Name <u>A.J. Bond Bridge</u>
Crossing Name <u>Gilbert River</u>	Alt. Name _____
Structure Type <u>Bridge</u>	Owner <u>MR DEPARTMENT OF MAIN R</u>
Construction Type <u>Girder/Beam</u>	District <u>403 Far North</u>
Construction Material <u>Steel</u>	LGA Id <u>226 ETHERIDGE SHIRE COUN</u>
Inspector <u>Roy West</u>	Date <u>01-OCT-2009</u>
Inspection Level 2 <input checked="" type="checkbox"/>	Programmed <input checked="" type="checkbox"/>
Level 3 <input type="checkbox"/>	Exceptional <input type="checkbox"/>
	Underwater <input type="checkbox"/>

Road Section		Start	End	TDist				
Id	Description	S Cway S	RPC	Dist	RPC	Dist	Start	End
92B	CROYDON - GEORG C	1	C 4	0.000	4	0.209	73.210	73.419

Film/Exposure Number	Sketch No	Location			Description	Id
		Modification	Group	Component		
09_01		O	AP1	AP	APPROACH 1	1100025015
09_02		O	AP1	GR	GUARDRAIL SIDE 1	1100025016
09_03		O	AP1	GR	GUARDRAIL SIDE 2	1100025017
09_04		O	AP1	GR	DAMAGE TO GUARDRAIL SIDE 1	1100025018
09_05		O	AP1	GR	DAMAGED TO GUARDRAIL SIDE 2	1100025019
09_06		O	AP1	GR	MISSING SPACER SIDE 2	1100025020
09_07		O	AP1	PRO	PROTECTION SIDE 1	1100025021
09_08		O	AP1	GR	DAMAGED POST SIDE 1	1100025022
09_09		O	A1	J1	ROUGH TRANSITION TO SPAN 1	1100025023
09_10		O	S1	K	SHOWING KERB ALONG SIDE 1	1100025024
09_11		O	S1	K	SHOWING KERB ALONG SIDE 2	1100025025
09_12		O	S1	WS	VIEW OF SPAN 1 WEARING SURFCAE	1100025026
09_13		O	P1	J1	VIEW OF JOINT WITH STEEL PLATE REMOVED	1100025027
09_14		O	P3	J1	VIEW OF JOINT WITH STEEL PLATE REMOVED	1100025028
09_15		O	S2	WS	VIEW OF SPAN 2 WEARING SURFACE	1100025029
09_16		O	S1	K	SHOWING SHRINKAGE CRACK SIMILAR ALONG BOTH	1100025030
09_17		O	S3	WS	VIEW OF SPAN 3 WEARING SURFACE	1100025031
09_18		O	P3	J2	VIEW OF JOINT WITH STEEL PLATE REMOVED	1100025032
09_19		O	P5	J1	VIEW OF JOINT WITH STEEL PLATE REMOVED	1100025033

Structure Id 7976 Name A.J. Bond Bridge
 Inspection Date 01-OCT-2009 Inspection Level 2 Level 3 Underwater

Film/Exposure Number	Sketch No	Location			Description	Id
		Modification	Group	Component		
09_20		O	S4	WS	VIEW OF SPAN 4 WEARING SURFACE	1100025034
09_21		O	S5	WS	VIEW OF SPAN 5 WEARING SURFACE	1100025035
09_22		O	P5	J2	VIEW OF JOINT WITH STEEL PLATE REMOVED	1100025036
09_23		O	P7	J1	VIEW OF JOINT WITH STEEL PLATE REMOVED	1100025037
09_24		O	S6	WS	VIEW OF SPAN 6 WEARING SURFACE	1100025038
09_25		O	S7	WS	VIEW OF SPAN 7 WEARING SURFACE	1100025039
09_26		O	P7	J2	VIEW OF JOINT WITH STEEL PLATE REMOVED	1100025040
09_27		O	P9	J1	VIEW OF JOINT WITH STEEL PLATE REMOVED	1100025041
09_28		O	S8	WS	VIEW OF SPAN 8 WEARING SURFACE	1100025042
09_29		O	S9	WS	VIEW OF SPAN 9 WEARING SURFACE	1100025043
09_30		O	P9	J2	VIEW OF JOINT WITH STEEL PLATE REMOVED	1100025044
09_31		O	P11	J1	VIEW OF JOINT WITH STEEL PLATE REMOVED	1100025045
09_32		O	S10	WS	VIEW OF SPAN 10 WEARING SURFACE	1100025046
09_33		O	S11	WS	SHOWING EXPOSED REO ON SURFACE	1100025047
09_34		O	S11	WS	SHOWING EXPOSED REO ON SURFACE	1100025048
09_35		O	S11	WS	VIEW OF SPAN 11 WEARING SURFACE	1100025049
09_36		O	P11	J2	VIEW OF JOINT WITH STEEL PLATE REMOVED	1100025050
09_37		O	S12	WS	VIEW OF SPAN 12 WEARING SURFACE	1100025051
09_38		O	S1	K	SPALL ON KERB SIDE 1 AT A2-J1	1100025052
09_39		O	A2	J1	SHOWING JOINT BETWEEN CONCRETE APPROACH &	1100025053
09_40		O	AP2	AP	APPROACH 2	1100025054
09_41		O	AP2	AP	SHOWING RECONSTRUCTED APPROACH WITH CONC	1100025055
09_42		O	AP2	AP	TYPICAL CRACKING AT PVC EMBEDDED IN AP2 APPRO	1100025056
09_43		O	AP2	PRO	GROUTED ROCK PITCH SIDE 1	1100025057
09_44		O	AP2	PRO	GROUTED ROCK PITCH SIDE 2	1100025058
09_45		O	P1	J1	SHOWING PROTRUSION OF BRASS BOLT FROM SOCH	1100025059

Structure Id 7976 Name A.J. Bond Bridge
 Inspection Date 01-OCT-2009 Inspection Level 2 Level 3 Underwater

Film/Exposure Number	Sketch No	Location			Description * Deck Surface (full width and alignment) * Side View (waterway, spans, piers, etc) * Underside (deck and pier construction) * Deficient Component and Major Defects * Undefined Elements	Id
		Modification	Group	Component		
09_46		O	A1	B	ENCASED IN CONCRETE	1100025060
09_47		O	A1	WW	BURIED UNDER SILTATION SIDE 1	1100025061
09_48		O	A1	WW	BURIED UNDER SILTATION SIDE 2	1100025062
09_49		O	A1	WW	SHOWING LARGE SCOUR INFRONT OF WING WALL SIDE 1	1100025063
09_50		O	S1	D	VIEW OF SPAN 1 DECK	1100025064
09_51		O	S1	XG	LOAD BEARING XG OVER SPAN 1	1100025065
09_52		O	P1	B	ENCASED IN CONCRETE P1-PW	1100025066
09_53		O	S2	G1	SHOWING REPLACED STUB BOLTS ON EXPANSION HINGE	1100025067
09_54		O	S2	XG	VIEW OF LOAD BEARING XG	1100025068
09_55		O	S1	W	VIEW OF UPSTREAM SIDE 2	1100025069
09_56		O	S1	W	VIEW OF DOWNSTREAM SIDE 1	1100025070
09_57		O	S2	XG	SHOWING LOAD BEARING XG CONCRETE ENCASED	1100025071
09_58		O	S2	G	LOSS OF PAINT PROTECTION. THIS RELATES TO ALL	1100025072
09_59		O	S3	XG	VIEW OF CRACK ALONG BOTTOM OF XG AND ENCAS	1100025073
09_60		O	P3	PW	VIEW OF VERTICAL CRACK BELOW G2 SIDE 2	1100025074
09_61		O	P3	PW	CLOSE UP OF CRACK ALONG BOTTOM OF XG	1100025075
09_62		O	P3	PW	VIEW OF VERTICAL CRACK BELOW G1 SIDE 1	1100025076
09_63		O	S3	G	MISSING STUB BOLTS ON FIXED HINGE COVER PLATE	1100025077
09_64		O	S3	XG	SHOWING PATCHED XG	1100025078
09_65		O	A2	WW	SHOWING SEVERE CRACK IN WING WALL SIDE 1	1100025079
09_66		O	A2	WW	SHOWING SEVERE CRACK IN WING WALL SIDE 2	1100025080
09_67		O	A2	A	VIEW OF SPALL ON ABUTMENT FACE ON OUTSIDE OF	1100025081
09_68		O	A2	A	VIEW OF SPALL ON ABUTMENT FACE ON INSIDE OF	1100025082
09_69		O	S5	XG	SHOWING PATCHED XG	1100025083
09_70		O	S6	G	MISSING FIXED HINGE COVER COVER SIDE 2	1100025084
09_71		O	S6	G	FIXED HINGE COVER PLATE, MISSING BOLTS AND PA	1100025085

Structure Id 7976 **Name** A.J. Bond Bridge
Inspection Date 01-OCT-2009 **Inspection Level 2** **Level 3** **Underwater**

Film/Exposure Number	Sketch No	Location			Description	Id
		Modification	Group	Component		
09_72		O	S8	XG	PATCHED XG	1100025086
09_73		O	S8	XG	VIEW OF 6x XG ALSO RELATES TO SPANS 2, 4, 6, 10	1100025087
09_74		O	S9	XG	VIEW OF 2x XG ALSO RELATES TO SPANS 3, 5, 7, 11	1100025088
09_75		O	A2	A	VIEW OF ABUTMENT WALL SHOWING ENCASED BEAF	1100025089
09_76		O	AP1	PRO	SHOWING TREES & VEGETATION GROUT SIDE 1	1100025090
09_77		O	AP1	PRO	SHOWING TREE GROWTH SIDE 2	1100025091
09_78		O	P1	P	TYPICAL VIEW OF BURIED PILES AT ALL PIERS	1100026113
09_79		O	S1	W	VIEW OF BRIDGE SPAN BETWEEN PIERS	1100026114
SKETCH 09_01		O	A1	WW	BURIED UNDER SILTATION A1	1100025092
SKETCH 09_02		O	P1	B	ENCASED IN CONCRETE	1100025093
SKETCH 09_03		O	P2	PW	PIER 2 PIER WALL	1100025094
SKETCH 09_04		O	P3	PW	VIEW OF VERTICAL CRACK	1100025095
SKETCH 09_05		O	P4	PW	PIER 4 PIER WALL	1100025096
SKETCH 09_06		O	P5	PW	PIER 5 PIER WALL	1100025097
SKETCH 09_07		O	P6	PW	PIER 6 PIER WALL	1100025098
SKETCH 09_08		O	P7	PW	PIER 7 PIER WALL	1100025099
SKETCH 09_09		O	P8	PW	PIER 8 PIER WALL	1100025100
SKETCH 09_10		O	P9	PW	PIER 9 PIER WALL	1100025101
SKETCH 09_11		O	P10	PW	PIER 10 PIER WALL	1100025102
SKETCH 09_12		O	P11	PW	PIER 11 PIER WALL	1100025103
SKETCH 09_13		O	A2	WW	SHOWING SEVERE CRACK ON A2	1100025104
SKETCH 09_14		O	S11	WS	SHOWING AREA OF EXPOSED REO	1100025105
SKETCH 09_15					SCOUR SOUNDINGS SHEETS	1100025106

Structure Id 7976 **Name** A.J. Bond Bridge
Inspection Date 01-OCT-2009 **Inspection Level 2** **Level 3** **Underwater**

Pictures

** All images printed for this report.

Structure Id 7976

Name A.J. Bond Bridge

Inspection Date 01-OCT-2009

Inspection Level 2

Level 3

Underwater

Pictures

** All images printed for this report.

Id **Date**

Film / Exposure Number **Sketch No**

Description

Mod	Category	Number	Comp Code	Comp No
<input type="text" value="O"/>	<input type="text" value="AP"/>	<input type="text" value="1"/>	<input type="text" value="AP"/>	<input type="text"/>



Id **Date**

Film / Exposure Number **Sketch No**

Description

Mod	Category	Number	Comp Code	Comp No
<input type="text" value="O"/>	<input type="text" value="AP"/>	<input type="text" value="1"/>	<input type="text" value="GR"/>	<input type="text"/>



Id **Date**

Film / Exposure Number **Sketch No**

Description

Mod	Category	Number	Comp Code	Comp No
<input type="text" value="O"/>	<input type="text" value="AP"/>	<input type="text" value="1"/>	<input type="text" value="GR"/>	<input type="text"/>



Structure Id 7976 Name A.J. Bond Bridge
 Inspection Date 01-OCT-2009 Inspection Level 2 Level 3 Underwater

Pictures

** All images printed for this report.

Id **Date**

Film / Exposure Number **Sketch No**

Description

Mod	Category	Number	Comp Code	Comp No
O	AP	1	GR	



Id **Date**

Film / Exposure Number **Sketch No**

Description

Mod	Category	Number	Comp Code	Comp No
O	AP	1	GR	



Id **Date**

Film / Exposure Number **Sketch No**

Description

Mod	Category	Number	Comp Code	Comp No
O	AP	1	GR	



Structure Id 7976

Name A.J. Bond Bridge

Inspection Date 01-OCT-2009

Inspection Level 2

Level 3

Underwater

Pictures

** All images printed for this report.

Id

Date

Film / Exposure Number

Sketch No

Description

Mod **Category** **Number** **Comp Code** **Comp No**



Id

Date

Film / Exposure Number

Sketch No

Description

Mod **Category** **Number** **Comp Code** **Comp No**



Id

Date

Film / Exposure Number

Sketch No

Description

Mod **Category** **Number** **Comp Code** **Comp No**



Structure Id 7976 Name A.J. Bond Bridge
 Inspection Date 01-OCT-2009 Inspection Level 2 Level 3 Underwater

Pictures

** All images printed for this report.

Id Date
 Film / Exposure Number Sketch No
 Description
 Mod Category Number Comp Code Comp No



Id Date
 Film / Exposure Number Sketch No
 Description
 Mod Category Number Comp Code Comp No



Id Date
 Film / Exposure Number Sketch No
 Description
 Mod Category Number Comp Code Comp No



Structure Id 7976 Name A.J. Bond Bridge
 Inspection Date 01-OCT-2009 Inspection Level 2 Level 3 Underwater

Pictures

** All images printed for this report.

Id **Date**

Film / Exposure Number **Sketch No**

Description

Mod	Category	Number	Comp Code	Comp No
<input type="text" value="O"/>	<input type="text" value="P"/>	<input type="text" value="1"/>	<input type="text" value="J1"/>	<input type="text"/>



Id **Date**

Film / Exposure Number **Sketch No**

Description

Mod	Category	Number	Comp Code	Comp No
<input type="text" value="O"/>	<input type="text" value="P"/>	<input type="text" value="3"/>	<input type="text" value="J1"/>	<input type="text"/>



Id **Date**

Film / Exposure Number **Sketch No**

Description

Mod	Category	Number	Comp Code	Comp No
<input type="text" value="O"/>	<input type="text" value="S"/>	<input type="text" value="2"/>	<input type="text" value="WS"/>	<input type="text"/>



Structure Id 7976 Name A.J. Bond Bridge
 Inspection Date 01-OCT-2009 Inspection Level 2 Level 3 Underwater

Pictures

** All images printed for this report.

Id **Date**

Film / Exposure Number **Sketch No**

Description

Mod	Category	Number	Comp Code	Comp No
O	S	1	K	



Id **Date**

Film / Exposure Number **Sketch No**

Description

Mod	Category	Number	Comp Code	Comp No
O	S	3	WS	



Id **Date**

Film / Exposure Number **Sketch No**

Description

Mod	Category	Number	Comp Code	Comp No
O	P	3	J2	



Structure Id 7976

Name A.J. Bond Bridge

Inspection Date 01-OCT-2009

Inspection Level 2

Level 3

Underwater

Pictures

** All images printed for this report.

Id

Date

Film / Exposure Number

Sketch No

Description

Mod Category Number Comp Code Comp No



Id

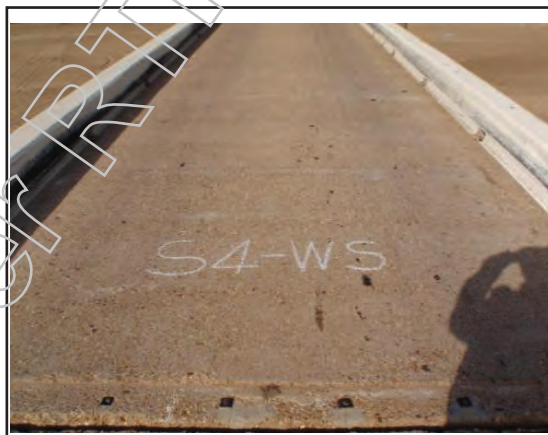
Date

Film / Exposure Number

Sketch No

Description

Mod Category Number Comp Code Comp No



Id

Date

Film / Exposure Number

Sketch No

Description

Mod Category Number Comp Code Comp No



Structure Id 7976

Name A.J. Bond Bridge

Inspection Date 01-OCT-2009

Inspection Level 2

Level 3

Underwater

Pictures

** All images printed for this report.

Id

Date

Film / Exposure Number

Sketch No

Description

Mod Category Number Comp Code Comp No



Id

Date

Film / Exposure Number

Sketch No

Description

Mod Category Number Comp Code Comp No



Id

Date

Film / Exposure Number

Sketch No

Description

Mod Category Number Comp Code Comp No



Structure Id 7976 Name A.J. Bond Bridge
 Inspection Date 01-OCT-2009 Inspection Level 2 Level 3 Underwater

Pictures

** All images printed for this report.

Id **Date**

Film / Exposure Number **Sketch No**

Description

Mod	Category	Number	Comp Code	Comp No
<input type="text" value="O"/>	<input type="text" value="S"/>	<input type="text" value="7"/>	<input type="text" value="WS"/>	<input type="text"/>



Id **Date**

Film / Exposure Number **Sketch No**

Description

Mod	Category	Number	Comp Code	Comp No
<input type="text" value="O"/>	<input type="text" value="P"/>	<input type="text" value="7"/>	<input type="text" value="J2"/>	<input type="text"/>



Id **Date**

Film / Exposure Number **Sketch No**

Description

Mod	Category	Number	Comp Code	Comp No
<input type="text" value="O"/>	<input type="text" value="P"/>	<input type="text" value="9"/>	<input type="text" value="J1"/>	<input type="text"/>



Structure Id 7976 Name A.J. Bond Bridge
 Inspection Date 01-OCT-2009 Inspection Level 2 Level 3 Underwater

Pictures

** All images printed for this report.

Id **Date**

Film / Exposure Number **Sketch No**

Description

Mod	Category	Number	Comp Code	Comp No
<input type="text" value="0"/>	<input type="text" value="S"/>	<input type="text" value="8"/>	<input type="text" value="WS"/>	<input type="text"/>



Id **Date**

Film / Exposure Number **Sketch No**

Description

Mod	Category	Number	Comp Code	Comp No
<input type="text" value="0"/>	<input type="text" value="S"/>	<input type="text" value="9"/>	<input type="text" value="WS"/>	<input type="text"/>



Id **Date**

Film / Exposure Number **Sketch No**

Description

Mod	Category	Number	Comp Code	Comp No
<input type="text" value="0"/>	<input type="text" value="P"/>	<input type="text" value="9"/>	<input type="text" value="J2"/>	<input type="text"/>



Structure Id 7976

Name A.J. Bond Bridge

Inspection Date 01-OCT-2009

Inspection Level 2

Level 3

Underwater

Pictures

** All images printed for this report.

Id

Date

Film / Exposure Number

Sketch No

Description

VIEW OF JOINT WITH STEEL PLATE REMOVED

Mod Category Number Comp Code Comp No



Id

Date

Film / Exposure Number

Sketch No

Description

VIEW OF SPAN 10 WEARING SURFACE

Mod Category Number Comp Code Comp No



Id

Date

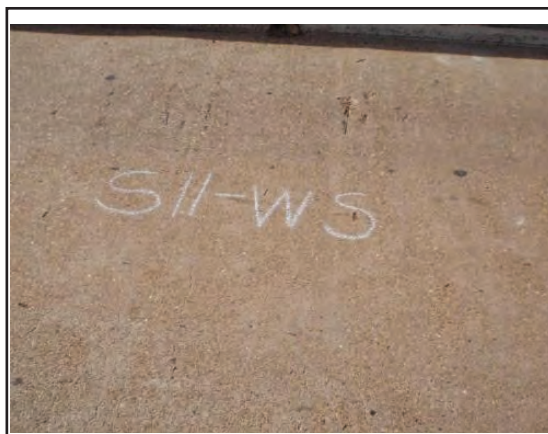
Film / Exposure Number

Sketch No

Description

SHOWING EXPOSED REO ON SURFACE

Mod Category Number Comp Code Comp No



Structure Id 7976 Name A.J. Bond Bridge
 Inspection Date 01-OCT-2009 Inspection Level 2 Level 3 Underwater

Pictures

** All images printed for this report.

Id **Date**

Film / Exposure Number **Sketch No**

Description

Mod	Category	Number	Comp Code	Comp No
O	S	11	WS	<input type="text"/>

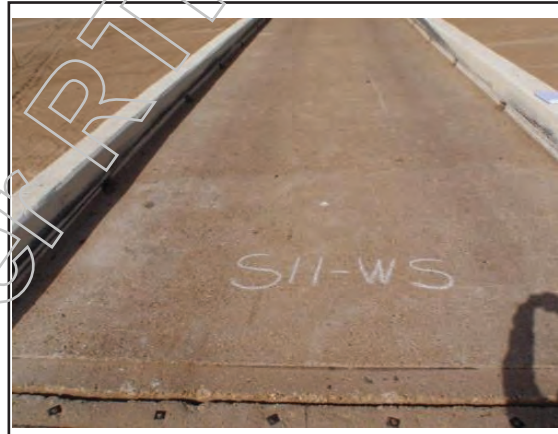


Id **Date**

Film / Exposure Number **Sketch No**

Description

Mod	Category	Number	Comp Code	Comp No
O	S	11	WS	<input type="text"/>



Id **Date**

Film / Exposure Number **Sketch No**

Description

Mod	Category	Number	Comp Code	Comp No
O	P	11	J2	<input type="text"/>



Structure Id 7976 Name A.J. Bond Bridge
 Inspection Date 01-OCT-2009 Inspection Level 2 Level 3 Underwater

Pictures

** All images printed for this report.

Id **Date**

Film / Exposure Number **Sketch No**

Description

Mod	Category	Number	Comp Code	Comp No
<input type="text" value="O"/>	<input type="text" value="S"/>	<input type="text" value="12"/>	<input type="text" value="WS"/>	<input type="text"/>



Id **Date**

Film / Exposure Number **Sketch No**

Description

Mod	Category	Number	Comp Code	Comp No
<input type="text" value="O"/>	<input type="text" value="S"/>	<input type="text" value="1"/>	<input type="text" value="K"/>	<input type="text"/>



Id **Date**

Film / Exposure Number **Sketch No**

Description

Mod	Category	Number	Comp Code	Comp No
<input type="text" value="O"/>	<input type="text" value="A"/>	<input type="text" value="2"/>	<input type="text" value="J1"/>	<input type="text"/>



Structure Id 7976 Name A.J. Bond Bridge
 Inspection Date 01-OCT-2009 Inspection Level 2 Level 3 Underwater

Pictures

** All images printed for this report.

Id **Date**

Film / Exposure Number **Sketch No**

Description

Mod	Category	Number	Comp Code	Comp No
0	AP	2	AP	



Id **Date**

Film / Exposure Number **Sketch No**

Description

Mod	Category	Number	Comp Code	Comp No
0	AP	2	AP	



Id **Date**

Film / Exposure Number **Sketch No**

Description

Mod	Category	Number	Comp Code	Comp No
0	AP	2	AP	



Structure Id 7976

Name A.J. Bond Bridge

Inspection Date 01-OCT-2009

Inspection Level 2

Level 3

Underwater

Pictures

** All images printed for this report.

Id

Date

Film / Exposure Number

Sketch No

Description

Mod Category Number Comp Code Comp No



Id

Date

Film / Exposure Number

Sketch No

Description

Mod Category Number Comp Code Comp No



Id

Date

Film / Exposure Number

Sketch No

Description

Mod Category Number Comp Code Comp No



Structure Id 7976 Name A.J. Bond Bridge
 Inspection Date 01-OCT-2009 Inspection Level 2 Level 3 Underwater

Pictures

** All images printed for this report.

Id Date
 Film / Exposure Number Sketch No
 Description
 Mod Category Number Comp Code Comp No



Id Date
 Film / Exposure Number Sketch No
 Description
 Mod Category Number Comp Code Comp No



Id Date
 Film / Exposure Number Sketch No
 Description
 Mod Category Number Comp Code Comp No



Structure Id 7976

Name A.J. Bond Bridge

Inspection Date 01-OCT-2009

Inspection Level 2

Level 3

Underwater

Pictures

** All images printed for this report.

Id

Date

Film / Exposure Number

Sketch No

Description

SHOWING LARGE SCOUR INFRONT OF WING WALL SIDE 1

Mod Category Number Comp Code Comp No



Id

Date

Film / Exposure Number

Sketch No

Description

VIEW OF SPAN 1 DECK

Mod Category Number Comp Code Comp No



Id

Date

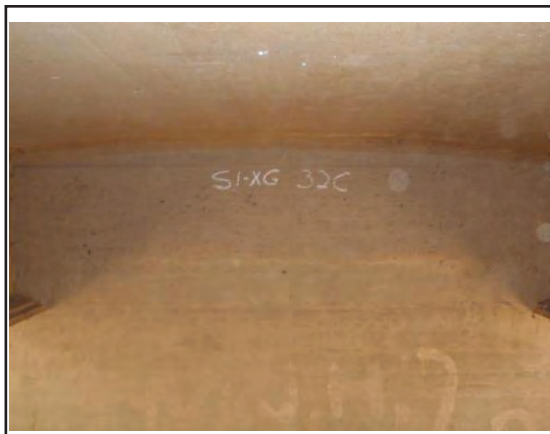
Film / Exposure Number

Sketch No

Description

LOAD BEARING XG OVER SPAN 1

Mod Category Number Comp Code Comp No



Structure Id 7976

Name A.J. Bond Bridge

Inspection Date 01-OCT-2009

Inspection Level 2

Level 3

Underwater

Pictures

** All images printed for this report.

Id

Date

Film / Exposure Number

Sketch No

Description

ENCASED IN CONCRETE P1-PW

Mod Category Number Comp Code Comp No



Id

Date

Film / Exposure Number

Sketch No

Description

SHOWING REPLACED STUB BOLTS ON EXPANSION HINGE PLATE

Mod Category Number Comp Code Comp No



Id

Date

Film / Exposure Number

Sketch No

Description

VIEW OF LOAD BEARING XG

Mod Category Number Comp Code Comp No



Structure Id 7976

Name A.J. Bond Bridge

Inspection Date 01-OCT-2009

Inspection Level 2 Level 3 Underwater

Pictures

** All images printed for this report.

Id **Date**

Film / Exposure Number **Sketch No**

Description

Mod	Category	Number	Comp Code	Comp No
<input type="text" value="O"/>	<input type="text" value="S"/>	<input type="text" value="1"/>	<input type="text" value="W"/>	<input type="text"/>



Id **Date**

Film / Exposure Number **Sketch No**

Description

Mod	Category	Number	Comp Code	Comp No
<input type="text" value="O"/>	<input type="text" value="S"/>	<input type="text" value="1"/>	<input type="text" value="W"/>	<input type="text"/>



Id **Date**

Film / Exposure Number **Sketch No**

Description

Mod	Category	Number	Comp Code	Comp No
<input type="text" value="O"/>	<input type="text" value="S"/>	<input type="text" value="2"/>	<input type="text" value="XG"/>	<input type="text"/>



Structure Id 7976

Name A.J. Bond Bridge

Inspection Date 01-OCT-2009

Inspection Level 2

Level 3

Underwater

Pictures

** All images printed for this report.

Id

Date

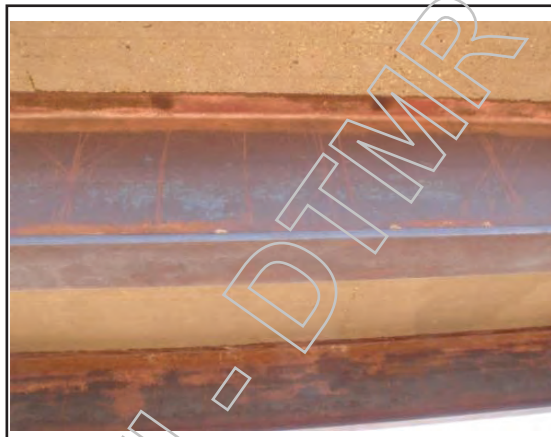
Film / Exposure Number

Sketch No

Description

LOSS OF PAINT PROTECTION. THIS RELATES TO ALL GIRDERS

Mod **Category** **Number** **Comp Code** **Comp No**



Id

Date

Film / Exposure Number

Sketch No

Description

VIEW OF CRACK ALONG BOTTOM OF XG AND ENCASED BEARINGS

Mod **Category** **Number** **Comp Code** **Comp No**



Id

Date

Film / Exposure Number

Sketch No

Description

VIEW OF VERTICAL CRACK BELOW G2 SIDE 2

Mod **Category** **Number** **Comp Code** **Comp No**



Structure Id 7976 Name A.J. Bond Bridge
 Inspection Date 01-OCT-2009 Inspection Level 2 Level 3 Underwater

Pictures

** All images printed for this report.

Id Date
 Film / Exposure Number Sketch No
 Description
 Mod Category Number Comp Code Comp No



Id Date
 Film / Exposure Number Sketch No
 Description
 Mod Category Number Comp Code Comp No



Id Date
 Film / Exposure Number Sketch No
 Description
 Mod Category Number Comp Code Comp No



Structure Id 7976

Name A.J. Bond Bridge

Inspection Date 01-OCT-2009

Inspection Level 2

Level 3

Underwater

Pictures

** All images printed for this report.

Id

Date

Film / Exposure Number

Sketch No

Description

Mod Category Number Comp Code Comp No



Id

Date

Film / Exposure Number

Sketch No

Description

Mod Category Number Comp Code Comp No



Id

Date

Film / Exposure Number

Sketch No

Description

Mod Category Number Comp Code Comp No



Structure Id 7976 **Name** A.J. Bond Bridge
Inspection Date 01-OCT-2009 **Inspection Level 2** **Level 3** **Underwater**

Pictures

** All images printed for this report.

Id **Date**

Film / Exposure Number **Sketch No**

Description
VIEW OF SPALL ON ABUTMENT FACE ON OUTSIDE OF GIRDER 2 SIDE 2

Mod	Category	Number	Comp Code	Comp No
0	A	2	A	



Id **Date**

Film / Exposure Number **Sketch No**

Description
VIEW OF SPALL ON ABUTMENT FACE ON INSIDE OF GIRDER 2 SIDE 2

Mod	Category	Number	Comp Code	Comp No
0	A	2	A	



Id **Date**

Film / Exposure Number **Sketch No**

Description
SHOWING PATCHED XG

Mod	Category	Number	Comp Code	Comp No
0	S	5	XG	



Structure Id 7976 Name A.J. Bond Bridge
 Inspection Date 01-OCT-2009 Inspection Level 2 Level 3 Underwater

Pictures

** All images printed for this report.

Id **Date**

Film / Exposure Number **Sketch No**

Description

Mod	Category	Number	Comp Code	Comp No
<input type="text" value="O"/>	<input type="text" value="S"/>	<input type="text" value="6"/>	<input type="text" value="G"/>	<input type="text"/>



Id **Date**

Film / Exposure Number **Sketch No**

Description

Mod	Category	Number	Comp Code	Comp No
<input type="text" value="O"/>	<input type="text" value="S"/>	<input type="text" value="6"/>	<input type="text" value="G"/>	<input type="text"/>



Id **Date**

Film / Exposure Number **Sketch No**

Description

Mod	Category	Number	Comp Code	Comp No
<input type="text" value="O"/>	<input type="text" value="S"/>	<input type="text" value="8"/>	<input type="text" value="XG"/>	<input type="text"/>



Structure Id 7976 Name A.J. Bond Bridge
 Inspection Date 01-OCT-2009 Inspection Level 2 Level 3 Underwater

Pictures

** All images printed for this report.

Id Date
 Film / Exposure Number Sketch No
 Description
 Mod Category Number Comp Code Comp No



Id Date
 Film / Exposure Number Sketch No
 Description
 Mod Category Number Comp Code Comp No



Id Date
 Film / Exposure Number Sketch No
 Description
 Mod Category Number Comp Code Comp No



Structure Id 7976 Name A.J. Bond Bridge
 Inspection Date 01-OCT-2009 Inspection Level 2 Level 3 Underwater

Pictures

** All images printed for this report.

Id **Date**

Film / Exposure Number **Sketch No**

Description

Mod	Category	Number	Comp Code	Comp No
<input type="text" value="O"/>	<input type="text" value="AP"/>	<input type="text" value="1"/>	<input type="text" value="PRO"/>	<input type="text"/>



Id **Date**

Film / Exposure Number **Sketch No**

Description

Mod	Category	Number	Comp Code	Comp No
<input type="text" value="O"/>	<input type="text" value="AP"/>	<input type="text" value="1"/>	<input type="text" value="PRO"/>	<input type="text"/>



Id **Date**

Film / Exposure Number **Sketch No**

Description

Mod	Category	Number	Comp Code	Comp No
<input type="text" value="O"/>	<input type="text" value="A"/>	<input type="text" value="1"/>	<input type="text" value="WW"/>	<input type="text"/>

Id **Date**

Film / Exposure Number **Sketch No**

Description

Mod	Category	Number	Comp Code	Comp No
<input type="text" value="O"/>	<input type="text" value="P"/>	<input type="text" value="1"/>	<input type="text" value="B"/>	<input type="text"/>

Structure Id 7976

Name A.J. Bond Bridge

Inspection Date 01-OCT-2009

Inspection Level 2 Level 3 Underwater

Pictures

** All images printed for this report.

Id Date

Film / Exposure Number Sketch No

Description

Mod Category Number Comp Code Comp No

Id Date

Film / Exposure Number Sketch No

Description

Mod Category Number Comp Code Comp No

Id Date

Film / Exposure Number Sketch No

Description

Mod Category Number Comp Code Comp No

Id Date

Film / Exposure Number Sketch No

Description

Mod Category Number Comp Code Comp No

Id Date

Film / Exposure Number Sketch No

Description

Mod Category Number Comp Code Comp No

Structure Id 7976

Name A.J. Bond Bridge

Inspection Date 01-OCT-2009

Inspection Level 2

Level 3

Underwater

Pictures

** All images printed for this report.

Id Date

Film / Exposure Number Sketch No

Description

Mod Category Number Comp Code Comp No

Id Date

Film / Exposure Number Sketch No

Description

Mod Category Number Comp Code Comp No

Id Date

Film / Exposure Number Sketch No

Description

Mod Category Number Comp Code Comp No

Id Date

Film / Exposure Number Sketch No

Description

Mod Category Number Comp Code Comp No

Id Date

Film / Exposure Number Sketch No

Description

Mod Category Number Comp Code Comp No

Structure Id 7976

Name A.J. Bond Bridge

Inspection Date 01-OCT-2009

Inspection Level 2

Level 3

Underwater

Pictures

** All images printed for this report.

Id Date

Film / Exposure Number Sketch No

Description

Mod Category Number Comp Code Comp No

Id Date

Film / Exposure Number Sketch No

Description

Mod Category Number Comp Code Comp No

Id Date

Film / Exposure Number Sketch No

Description

Mod Category Number Comp Code Comp No

Id Date

Film / Exposure Number Sketch No

Description

Mod Category Number Comp Code Comp No



Structure Id	7976	Name	A.J. Bond Bridge
Inspection Date	01-OCT-2009	Inspection Level 2	<input checked="" type="checkbox"/>
		Level 3	<input type="checkbox"/>
		Underwater	<input type="checkbox"/>

Pictures

** All images printed for this report.

Id	1100026114	Date	01-OCT-2009
----	------------	------	-------------

Film / Exposure Number	Sketch No
09_79	

Description

VIEW OF BRIDGE SPAN BETWEEN PIERS

Mod	Category	Number	Comp Code	Comp No
O	S	1	W	



Released under RTI - DTMR

Structure Id <u>7976</u>	Name <u>A.J. Bond Bridge</u>
Crossing Name <u>Gilbert River</u>	Alt. Name _____
Structure Type <u>Bridge</u>	Owner <u>MR DEPARTMENT OF MAIN R</u>
Construction Type <u>Girder/Beam</u>	District <u>403 Far North</u>
Construction Material <u>Steel</u>	LGA Id <u>226 ETHERIDGE SHIRE COUN</u>
Inspector <u>George R Kaine</u>	Date <u>03-OCT-2012</u>
Inspection Level 2 <input checked="" type="checkbox"/>	Programmed <input checked="" type="checkbox"/>
Level 3 <input type="checkbox"/>	Exceptional <input type="checkbox"/>
	Underwater <input type="checkbox"/>

Road Section		Start	End	TDist				
Id	Description	S Cway S	RPC	Dist	RPC	Dist	Start	End
92B	CROYDON - GEORG C	1	C 4	0.000	4	0.209	73.210	73.419

Film/Exposure Number	Sketch No	Location			Description	Id
		Modification	Group	Component		
12_01		O	AP1	AP	approach 1	59298
12_02		O	AP1	AP	protection side 1	59299
12_03		O	AP1	GR1	damaged melt end side 1	59239
12_04		O	AP1	GR1	2 x traffic damaged rails side 1	59240
12_05		O	AP1	GR1	view of bent post side 1	59241
12_06		O	AP1	GR1	showing missing spacer side 2	59242
12_07		O	AP1	GR1	view of damaged spacer side 2	59243
12_08		O	AP1	GR	showing damaged fish tail and spacer side 2.	59300
12_09		O	S1	K1	showing crack on approach kerb to span 1 kerb side 2.	59244
12_10		O	S1	WS	showing ws across bridge spans	59301
12_11		O	S1	K	showing kerb alignment side 1, similar for side 2.	59302
12_12		O	P1	J1	showing removed joint cover plate, similar for other	59247
12_13		O	S11	WS	view of exposed reo on deck	59253
12_14		O	S12	K1	showing crack on kerb 1	59303
12_15		O	AP2	AP	view of crack on overlay	59254
12_16		O	AP2	AP	showing crack on concrete approach	59304
12_17		O	AP2	AP	approach 2	59305
12_18		O	AP2	AP	showing sand blasted kerb 2	59306
12_19		O	AP2	PRO	grouted rock protection	59307

Structure Id 7976 **Name** A.J. Bond Bridge
Inspection Date 03-OCT-2012 **Inspection Level 2** **Level 3** **Underwater**

Film/Exposure Number	Sketch No	Location			Description	Id
		Modification	Group	Component		
12_20		O	A1	WW	showing crack on wingwall side 1 similar for other	59308
12_21		O	A2	A	showing cracks and spall	59309
12_22		O	S1	G1	showing sand blasted girders, similar for other.	59257
12_23		O	S10	G1	view of boxed expansion joint on girder	59310
12_24		O	S12	W	local scouring side 1	59277
12_25		O	P10	P	view of exposed reo	59311
12_26		O	S3	D	view of exposed reo	59312
12_27		O	P6	PW	flood debris against PW	59270
12_28		O	P1	B	showing concrete encased bearings, similar for other	59313
12_29		O	P5	PW	small exposed reo	59314
12_30		O	S1	D	showing 0.2mm on deck.	59315
12_31		O	S1	G1	showing area of rust	59258
12_32		O	A1	WW	view of wing buried by silt, similar for other wing.	59316
12_33		O	P10	P	exposed pile from flood	59317
12_34		O	S1	K	id tag of structure	59318

Pictures

** All images printed for this report.

Id **Date**

Film / Exposure Number **Sketch No**

Description

Mod	Category	Number	Comp Code	Comp No
O	AP	1	GR	1



Structure Id 7976 Name A.J. Bond Bridge
 Inspection Date 03-OCT-2012 Inspection Level 2 Level 3 Underwater

Pictures

** All images printed for this report.

Id **Date**

Film / Exposure Number **Sketch No**

Description

Mod	Category	Number	Comp Code	Comp No
O	AP	1	GR	1



Id **Date**

Film / Exposure Number **Sketch No**

Description

Mod	Category	Number	Comp Code	Comp No
O	AP	1	GR	1



Id **Date**

Film / Exposure Number **Sketch No**

Description

Mod	Category	Number	Comp Code	Comp No
O	AP	1	GR	1



Structure Id 7976

Name A.J. Bond Bridge

Inspection Date 03-OCT-2012

Inspection Level 2

Level 3

Underwater

Pictures

** All images printed for this report.

Id

Date

Film / Exposure Number

Sketch No

Description

VIEW OF DAMAGED SPACER SIDE 2

Mod Category Number Comp Code Comp No



Id

Date

Film / Exposure Number

Sketch No

Description

SHOWING CRACK ON APPROACH KERB TO SPAN 1 KERB SIDE 2.

Mod Category Number Comp Code Comp No



Id

Date

Film / Exposure Number

Sketch No

Description

SHOWING REMOVED JOINT COVER PLATE, SIMILAR FOR OTHER

Mod Category Number Comp Code Comp No



Structure Id 7976 Name A.J. Bond Bridge
 Inspection Date 03-OCT-2012 Inspection Level 2 Level 3 Underwater

Pictures

** All images printed for this report.

Id Date
 Film / Exposure Number Sketch No
 Description
 Mod Category Number Comp Code Comp No



Id Date
 Film / Exposure Number Sketch No
 Description
 Mod Category Number Comp Code Comp No



Id Date
 Film / Exposure Number Sketch No
 Description
 Mod Category Number Comp Code Comp No



Structure Id 7976

Name A.J. Bond Bridge

Inspection Date 03-OCT-2012

Inspection Level 2

Level 3

Underwater

Pictures

** All images printed for this report.

Id

Date

Film / Exposure Number

Sketch No

Description

Mod Category Number Comp Code Comp No



Id

Date

Film / Exposure Number

Sketch No

Description

Mod Category Number Comp Code Comp No



Id

Date

Film / Exposure Number

Sketch No

Description

Mod Category Number Comp Code Comp No



Structure Id 7976 Name A.J. Bond Bridge
 Inspection Date 03-OCT-2012 Inspection Level 2 Level 3 Underwater

Pictures

** All images printed for this report.

Id **Date**

Film / Exposure Number **Sketch No**

Description

Mod	Category	Number	Comp Code	Comp No
O	AP	1	AP	<input type="text"/>



Id **Date**

Film / Exposure Number **Sketch No**

Description

Mod	Category	Number	Comp Code	Comp No
O	AP	1	AP	<input type="text"/>



Id **Date**

Film / Exposure Number **Sketch No**

Description

Mod	Category	Number	Comp Code	Comp No
O	AP	1	GR	<input type="text"/>



Structure Id 7976 Name A.J. Bond Bridge
 Inspection Date 03-OCT-2012 Inspection Level 2 Level 3 Underwater

Pictures

** All images printed for this report.

Id **Date**

Film / Exposure Number **Sketch No**

Description

Mod	Category	Number	Comp Code	Comp No
O	S	1	WS	<input type="text"/>



Id **Date**

Film / Exposure Number **Sketch No**

Description

Mod	Category	Number	Comp Code	Comp No
O	S	1	K	<input type="text"/>



Id **Date**

Film / Exposure Number **Sketch No**

Description

Mod	Category	Number	Comp Code	Comp No
O	S	12	K	1



Structure Id 7976

Name A.J. Bond Bridge

Inspection Date 03-OCT-2012

Inspection Level 2

Level 3

Underwater

Pictures

** All images printed for this report.

Id

Date

Film / Exposure Number

Sketch No

Description

Mod **Category** **Number** **Comp Code** **Comp No**



Id

Date

Film / Exposure Number

Sketch No

Description

Mod **Category** **Number** **Comp Code** **Comp No**



Id

Date

Film / Exposure Number

Sketch No

Description

Mod **Category** **Number** **Comp Code** **Comp No**



Structure Id 7976 Name A.J. Bond Bridge
 Inspection Date 03-OCT-2012 Inspection Level 2 Level 3 Underwater

Pictures

** All images printed for this report.

Id **Date**

Film / Exposure Number **Sketch No**

Description

Mod	Category	Number	Comp Code	Comp No
<input type="text" value="0"/>	<input type="text" value="AP"/>	<input type="text" value="2"/>	<input type="text" value="PRO"/>	<input type="text"/>



Id **Date**

Film / Exposure Number **Sketch No**

Description

Mod	Category	Number	Comp Code	Comp No
<input type="text" value="0"/>	<input type="text" value="A"/>	<input type="text" value="1"/>	<input type="text" value="WW"/>	<input type="text"/>



Id **Date**

Film / Exposure Number **Sketch No**

Description

Mod	Category	Number	Comp Code	Comp No
<input type="text" value="0"/>	<input type="text" value="A"/>	<input type="text" value="2"/>	<input type="text" value="A"/>	<input type="text"/>



Structure Id 7976 Name A.J. Bond Bridge
 Inspection Date 03-OCT-2012 Inspection Level 2 Level 3 Underwater

Pictures

** All images printed for this report.

Id **Date**

Film / Exposure Number **Sketch No**

Description

Mod	Category	Number	Comp Code	Comp No
<input type="text" value="O"/>	<input type="text" value="S"/>	<input type="text" value="10"/>	<input type="text" value="G"/>	<input type="text" value="1"/>



Id **Date**

Film / Exposure Number **Sketch No**

Description

Mod	Category	Number	Comp Code	Comp No
<input type="text" value="O"/>	<input type="text" value="P"/>	<input type="text" value="10"/>	<input type="text" value="P"/>	<input type="text"/>



Id **Date**

Film / Exposure Number **Sketch No**

Description

Mod	Category	Number	Comp Code	Comp No
<input type="text" value="O"/>	<input type="text" value="S"/>	<input type="text" value="3"/>	<input type="text" value="D"/>	<input type="text"/>



Structure Id 7976

Name A.J. Bond Bridge

Inspection Date 03-OCT-2012

Inspection Level 2

Level 3

Underwater

Pictures

** All images printed for this report.

Id Date

Film / Exposure Number Sketch No

Description

Mod	Category	Number	Comp Code	Comp No
<input type="text" value="O"/>	<input type="text" value="P"/>	<input type="text" value="1"/>	<input type="text" value="B"/>	<input type="text"/>



Id Date

Film / Exposure Number Sketch No

Description

Mod	Category	Number	Comp Code	Comp No
<input type="text" value="O"/>	<input type="text" value="P"/>	<input type="text" value="5"/>	<input type="text" value="PW"/>	<input type="text"/>

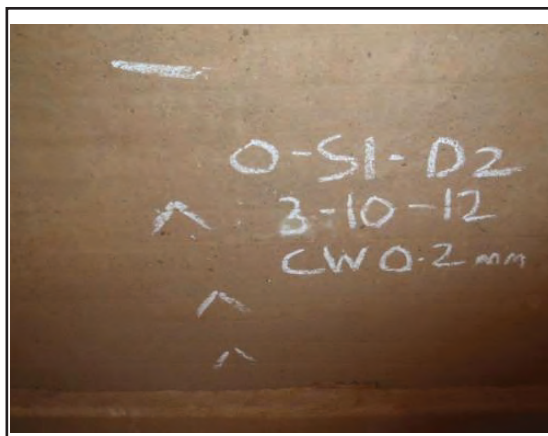


Id Date

Film / Exposure Number Sketch No

Description

Mod	Category	Number	Comp Code	Comp No
<input type="text" value="O"/>	<input type="text" value="S"/>	<input type="text" value="1"/>	<input type="text" value="D"/>	<input type="text"/>



Structure Id 7976

Name A.J. Bond Bridge

Inspection Date 03-OCT-2012

Inspection Level 2

Level 3

Underwater

Pictures

** All images printed for this report.

Id

Date

Film / Exposure Number

Sketch No

Description

VIEW OF WING BURIED BY SILT, SIMILAR FOR OTHER WING.

Mod Category Number Comp Code Comp No



Id

Date

Film / Exposure Number

Sketch No

Description

EXPOSED PILE FROM FLOOD

Mod Category Number Comp Code Comp No



Id

Date

Film / Exposure Number

Sketch No

Description

ID TAG OF STRUCTURE

Mod Category Number Comp Code Comp No



Structure Condition Inspection Report

B2/1

Sheet

1 Of 6

Structure Id 7976

Name A.J. Bond Bridge

Crossing Name Gilbert River

Alt. Name _____

Structure Type Bridge

Owner MR DEPARTMENT OF MAIN RO

Construction Type Girder/Beam

District 403 Far North

Construction Material Steel

LGA Id 226 ETHERIDGE SHIRE COUNC

Inspector George R Kaine

Date 03-OCT-2012

Inspection Level 2

Programmed

Undersize Components

Level 3

Exceptional

Underwater

Road Section

Start

End

TDist

Id	Description	S	Cway	S	RPC	Dist	RPC	Dist	Start	End
92B	CROYDON - GEORG C	1	C	4	0.000	4	0.209	73.210	73.419	

Overall Ratings

1	2	3	4	5	Comments
		X			

Original Structure (O)

In reference to the original design drawings for the Gilbert River Bridge job plan #57822 & #57824 the chainage has been marked incorrectly so ABUT A is ABUT B.

All piers from 1 to 11 have been sand blasted by moving river sand leaving the surface water worn. All steel girders have been sand blasted back to bare metal, nil rust appearing but girders should be painted.

Cracks along joint at bottom of girders over piers require monitoring periodically for further cracking or sealed. Both wing walls on Abutment B require to be patched and sealed.

NO CHANGE FROM 2009 REPORT

Widening (WLn, WRn) Lengthening (L1, L2) Raised (Ra) Redecked (Re) Shortening (S1, S2) Strengthening (St)

Widening (WLn, WRn), Lengthening (L1, L2), Raised (Ra), Redecked (Re), Shortening (S1, S2), Strengthening (St)

Structure Condition Inspection Report

B2/2

Sheet

2 Of 6

Structure Id 7976

Name A.J. Bond Bridge

Inspection Date 03-OCT-2012

Inspection Level 2 Level 3 Underwater

Component Location				Exposure Class	Quantity	Unit	Quantity Per Condition State				Maintenance Req'd	Comments
Modification	Group	Component	Standard				1	2	3	4		
O	AP1	AP	70O	2	1.0	EACH		1.0				
O	AP1	GR	72S	2	2.0	EACH				2.0		
Damage to melt end, bent post at kerb. 2 x rails traffic damage side 1. (photos 12_03, 04 and 05) Traffic damage to fish tail and post, bent spacer and 1 missing spacer side 2. (photos 12_06 & 07) Not connected to bridge.												
O	AP1	PRO	53O	2	40.0	M2		40.0				
O	A1	J1	15O	2	3.4	LINM		3.4				
O	S1	WS	1O	2	38.0	M2		38.0				
O	S1	K	3C	2	22.4	LINM		22.0	0.4			Cracked on approach kerb to span 1 kerb. (photo 12_09)
O	P1	J1	14S	2	3.4	LINM			3.4			Steel plate has been removed. (photo 12_12 similar for other) No change from 2009 report.
O	S2	WS	1C	2	62.2	M2		62.2				
O	S2	K	3C	2	36.4	LINM		36.4				
O	S3	WS	1C	2	61.8	M2		61.8				
O	S3	K	3C	2	36.4	LINM		36.4				
O	P3	J1	14S	2	3.4	LINM			3.4			Steel plate has been removed.
O	P3	J2	14S	2	3.4	LINM			3.4			No change from 2009 report.
O	S4	WS	1C	2	62.2	M2		62.2				
O	S4	K	3C	2	36.6	LINM		36.6				
O	S5	WS	1C	2	62.2	M2		62.2				
O	S5	K	3C	2	36.6	LINM		36.6				
O	P5	J1	14S	2	3.4	LINM			3.4			No change from 2009 report.
O	P5	J2	14S	2	3.4	LINM			3.4			No change from 2009 report.
O	S6	WS	1C	2	63.2	M2		63.2				
O	S6	K	3C	2	37.2	LINM		37.2				
O	S7	WS	1C	2	61.2	M2		61.2				
O	S7	K	3C	2	36.0	LINM		36.0				
O	P7	J1	14S	2	3.4	LINM			3.4			No change from 2009 report.
O	P7	J2	14S	2	3.4	LINM			3.4			No change from 2009 report.
O	S8	WS	1C	2	61.8	M2		61.8				
O	S8	K	3C	2	36.4	LINM		36.4				
O	S9	WS	1C	2	63.0	M2		63.0				

Structure Condition Inspection Report

B2/2

Sheet

3 Of 6

Structure Id 7976

Name A.J. Bond Bridge

Inspection Date 03-OCT-2012

Inspection Level 2 Level 3 Underwater

Component Location				Exposure Class	Quantity	Unit	Quantity Per Condition State				Maintenance Req'd	Comments * Location of item/condition * Description of defects by location type, magnitude, extent * References of sketches and photos (Roll/Exposure Nos)
Modification	Group	Component	Standard				1	2	3	4		
O	S9	K	3C	2	37.0	LINM		37.0				
O	P9	J1	14S	2	3.4	LINM			3.4			No change from 2009 report.
O	P9	J2	14S	2	3.4	LINM			3.4			No change from 2009 report.
O	S10	WS	1C	2	61.6	M2		61.6				
O	S10	K	3C	2	36.2	LINM		36.2				
O	S11	WS	1C	2	61.8	M2		60.8	1.0			10m(2) of exposed reo - monitor. (photo 12_13)
O	S11	K	3C	2	36.4	LINM		36.4				
O	P11	J1	14S	2	3.4	LINM			3.4			No change from 2009 report.
O	S12	WS	1C	2	53.0	M2		53.0				
O	S12	K	3C	2	31.2	LINM		31.2				Crack on kerb side 1. (photo 12_14)
O	A2	J1	15O	2	3.4	LINM		3.4				
O	AP2	PRO	53O	2	80.0	M2		80.0				
O	AP2	GR	72S	2	2.0	EACH		2.0				No change from 2009 report.
O	AP2	AP	70O	2	1.0	EACH			1.0			Cracks on overlay - monitor. (photo 12_15)
O	A1	P	56C	2	8.0	EACH	X	X	X	X		Buried
O	A1	CAP	59C	2	1.0	EACH	X	X	X	X		Buried
O	A1	A	50C	2	1.0	EACH	X	X	X	X		Buried
O	A1	B	40O	2	2.0	EACH	X	X	X	X		Encased in concrete. (photo 12_28 similar for other)
O	A1	WW	51C	2	2.0	EACH	X	X	X	X		Buried by silt, unable to inspect. (photo 12_20)
O	S1	D	20C	2	44.0	M2		44.0				0.2mm crack on underside of deck - monitor. (photo 12_30)
O	S1	G	22S	2	2.0	EACH			2.0			Loss of paint protection, no change. (photo 12_22 similar for other)
O	S1	XG	32C	2	2.0	EACH		2.0				
O	S1	W	71O	2	1.0	EACH		1.0				
O	P1	P	56C	2	2.0	EACH	X	X	X	X		Buried
O	P1	PW	53C	2	17.4	M2		17.4				
O	P1	B	40O	2	2.0	EACH	X	X	X	X		Encased in concrete. (photo 12_28)
O	S2	D	20C	2	80.0	M2		80.0				
O	S2	G	22S	2	2.0	EACH			2.0			Loss of paint protection, no change.
O	S2	XG	31C	2	2.0	EACH		2.0				

Structure Condition Inspection Report

B2/2

Sheet

4 Of 6

Structure Id 7976

Name A.J. Bond Bridge

Inspection Date 03-OCT-2012

Inspection Level 2 Level 3 Underwater

Component Location				Exposure Class	Quantity	Unit	Quantity Per Condition State				Maintenance Req'd	Comments * Location of item/condition * Description of defects by location type, magnitude, extent * References of sketches and photos (Roll/Exposure Nos)
Modification	Group	Component	Standard				1	2	3	4		
O	S2	XG	32C	2	1.0	EACH		1.0				
O	S2	W	71O	2	1.0	EACH		1.0				
O	P2	P	56C	2	2.0	EACH	X	X	X	X		Buried
O	P2	PW	58C	2	27.4	M2			27.4			No change, refer sketch from 2009 report.
O	P2	B	40O	2	2.0	EACH	X	X	X	X		Encased in concrete. (photo 12_28)
O	S3	D	20C	2	80.0	M2		80.0				
O	S3	G	22S	2	2.0	EACH			2.0			Loss of paint protection, no change.
O	S3	XG	31C	2	2.0	EACH		2.0				
O	S3	XG	32C	2	1.0	EACH		1.0				
O	S3	W	71O	2	1.0	EACH		1.0				
O	P3	P	56C	2	2.0	EACH	X	X	X	X		Buried under sand, refer sketch from 2009 report.
O	P3	PW	58C	2	27.4	M2			27.4			No change, refer sketch from 2009 report.
O	P3	B	40O	2	2.0	EACH	X	X	X	X		Encased in concrete. (photo 12_28)
O	S4	D	20C	2	80.0	M2		80.0				
O	S4	G	22S	2	2.0	EACH			2.0			Loss of paint protection, stub bolts have been replaced.
O	S4	XG	31C	2	6.0	EACH		6.0				
O	S4	XG	32C	2	1.0	EACH		1.0				
O	S4	W	71O	2	1.0	EACH		1.0				
O	P4	P	56C	2	2.0	EACH	X	X	X	X		Buried under sand, refer sketch from 2009 report.
O	P4	PW	58C	2	27.4	M2			27.4			No change, refer sketch from 2009 report.
O	P4	B	40O	2	2.0	EACH	X	X	X	X		Encased in concrete. (photo 12_28)
O	S5	D	20C	2	80.0	M2		80.0				
O	S5	G	22S	2	2.0	EACH			2.0			Loss of paint section, no change.
O	S5	XG	31C	2	2.0	EACH			2.0			Small area of exposed reo - monitor.
O	S5	XG	32C	2	1.0	EACH		1.0				
O	S5	W	71O	2	1.0	EACH		1.0				
O	P5	P	56C	2	2.0	EACH	X	X	X	X		Buried under sand.
O	P5	PW	58C	2	27.4	M2			27.4			No change, refer sketch from 2009 report.
O	P5	B	40O	2	2.0	EACH	X	X	X	X		Encased in concrete. (photo 12_28)
O	S6	D	20C	2	80.0	M2		80.0				

Structure Condition Inspection Report

B2/2

Sheet

5 Of 6

Structure Id 7976

Name A.J. Bond Bridge

Inspection Date 03-OCT-2012

Inspection Level 2 Level 3 Underwater

Component Location				Exposure Class	Quantity	Unit	Quantity Per Condition State				Maintenance Req'd	Comments * Location of item/condition * Description of defects by location type, magnitude, extent * References of sketches and photos (Roll/Exposure Nos)
Modification	Group	Component	Standard				1	2	3	4		
O	S6	G	22S	2	2.0	EACH			2.0			Loss of paint protection side 2 hinge cover plate has been reinstalled.
O	S6	XG	31C	2	6.0	EACH		6.0				
O	S6	XG	32C	2	1.0	EACH		1.0				
O	S6	W	71O	2	1.0	EACH		1.0				
O	P6	P	56C	2	2.0	EACH	X	X	X	X		Buried under sand.
O	P6	PW	58C	2	27.4	M2			27.4			No change, refer sketch from 2009 report. Flood debris against PW side 2, (photo 12_27)
O	P6	B	40O	2	2.0	EACH	X	X	X	X		Encased in concrete. (photo 12_28)
O	S7	D	20C	2	80.0	M2		80.0				
O	S7	G	22S	2	2.0	EACH			2.0			Loss of paint protection, no change.
O	S7	XG	31C	2	2.0	EACH		2.0				
O	S7	XG	32C	2	1.0	EACH		1.0				
O	S7	W	71O	2	1.0	EACH		1.0				
O	P7	P	56C	2	2.0	EACH	X	X	X	X		Buried under sand.
O	P7	PW	58C	2	27.4	M2			27.4			No change, refer sketch from 2009 report.
O	P7	B	40O	2	2.0	EACH	X	X	X	X		Encased in concrete. (photo 12_28)
O	S8	D	20C	2	80.0	M2		80.0				
O	S8	G	22S	2	2.0	EACH			2.0			Loss of paint protection, no change.
O	S8	XG	31C	2	6.0	EACH		6.0				
O	S8	XG	32C	2	1.0	EACH		1.0				
O	S8	W	71O	2	1.0	EACH		1.0				
O	P8	P	56C	2	2.0	EACH	X	X	X	X		Buried under sand.
O	P8	PW	58C	2	27.4	M2			27.4			No change, refer sketch from 2009 report.
O	P8	B	40O	2	2.0	EACH	X	X	X	X		Encased in concrete. (photo 12_28)
O	S9	D	20C	2	80.0	M2		80.0				
O	S9	G	22S	2	2.0	EACH			2.0			Loss of paint protection, no change.
O	S9	XG	31C	2	2.0	EACH		2.0				
O	S9	XG	32C	2	1.0	EACH		1.0				
O	S9	W	71O	2	1.0	EACH		1.0				
O	P9	P	56C	2	2.0	EACH	X	X	X	X		Buried under sand.

Structure Condition Inspection Report

B2/2

Sheet

6 Of 6

Structure Id 7976

Name A.J. Bond Bridge

Inspection Date 03-OCT-2012

Inspection Level 2 Level 3 Underwater

Component Location				Exposure Class	Quantity	Unit	Quantity Per Condition State				Maintenance Req'd	Comments * Location of item/condition * Description of defects by location type, magnitude, extent * References of sketches and photos (Roll/Exposure Nos)
Modification	Group	Component	Standard				1	2	3	4		
O	P9	PW	58C	2	27.4	M2			27.4			No change, refer sketch from 2009 report.
O	P9	B	40O	2	2.0	EACH	X	X	X	X		Encased in concrete. (photo 12_28)
O	S10	D	20C	2	80.0	M2		80.0				
O	S10	G	22S	2	2.0	EACH			2.0			No change, loss of paint protection.
O	S10	XG	31C	2	6.0	EACH		6.0				
O	S10	XG	32C	2	1.0	EACH		1.0				
O	S10	W	71O	2	1.0	EACH		1.0				
O	P10	P	56C	2	2.0	EACH	X	X	X	X		Buried under sand.
O	P10	PW	58C	2	27.4	M2			27.4			No change, refer sketch from 2009 report.
O	P10	B	40O	2	2.0	EACH	X	X	X	X		Encased in concrete. (photo 12_28)
O	S11	D	20C	2	80.0	M2		80.0				
O	S11	G	22S	2	2.0	EACH			2.0			No change, loss of paint protection.
O	S11	XG	31C	2	2.0	EACH		2.0				
O	S11	XG	32C	2	1.0	EACH		1.0				
O	S11	W	71O	2	1.0	EACH		1.0				
O	P11	P	56C	2	2.0	EACH	X	X	X	X		Buried under sand.
O	P11	PW	58C	2	27.4	M2			27.4			No change, refer sketch from 2009 report.
O	P11	B	40O	2	2.0	EACH	X	X	X	X		Encased in concrete. (photo 12_28)
O	S12	D	20C	2	60.0	M2		60.0				
O	S12	G	22S	2	2.0	EACH			2.0			No change, loss of paint protection.
O	S12	XG	31C	2	3.0	EACH		3.0				
O	S12	XG	32C	2	1.0	EACH		1.0				
O	S12	W	71O	2	1.0	EACH			1.0			Localised scouring on side 1 - monitor. (photo 12_24)
O	A2	F	59C	2	1.0	EACH	X	X	X	X		Buried under sand.
O	A2	A	50C	2	1.0	EACH		1.0				No change from 2009 report.
O	A2	B	40O	2	2.0	EACH	X	X	X	X		Encased in concrete. (photo 12_28)
O	A2	WW	51C	2	2.0	EACH			2.0			No change from 2009 report, refer photo 2009_13.

Structure Id <u>7976</u>	Name <u>A.J. Bond Bridge</u>
Crossing Name <u>Gilbert River</u>	Alt. Name _____
Structure Type <u>Bridge</u>	Owner <u>MR DEPARTMENT OF MAIN R</u>
Construction Type <u>Girder/Beam</u>	District <u>403 Far North</u>
Construction Material <u>Steel</u>	LGA Id <u>226 ETHERIDGE SHIRE COUN</u>
Inspector <u>Steve W Von Deest</u>	Date <u>28-OCT-2015</u>
Inspection Level 2 <input checked="" type="checkbox"/>	Programmed <input checked="" type="checkbox"/>
Level 3 <input type="checkbox"/>	Exceptional <input type="checkbox"/>
	Underwater <input type="checkbox"/>

Road Section		Start	End	TDist				
Id	Description	S Cway S	RPC	Dist	RPC	Dist	Start	End
92B	CROYDON - GEORG C	1	C 4	0.000	4	0.209	73.210	73.419

Film/Exposure Number	Sketch No	Location			Description * Deck Surface (full width and alignment) * Side View (waterway, spans, piers, etc) * Underside (deck and pier construction) * Deficient Component and Major Defects * Undefined Elements	Id
		Modification	Group	Component		
15_01		O	AP1	AP	General view of approach	292076
15_02		O	S1	W	General side view	292077
15_03		O	P1	H	Underside view	292078
15_04		O	S1	WS	View across deck	292079
15_05		O	AP1	AP	Showing width markers AP1	292080
15_08		O	AP2	AP	Causeway at AP2	292081
15_09		O	A1	A	View of A1	292082
15_10		O	P2	PW	View of P2	292083
15_11		O	P3	PW	View of P3	292084
15_12		O	P4	PW	View of P4	292085
15_13		O	P5	PW	View of P5	292086
15_14		O	P6	PW	View of P6	292087
15_15		O	P7	PW	View of P7	292088
15_16		O	P8	PW	View of P8	292089
15_17		O	P9	PW	View of P9	292090
15_18		O	P10	PW	View of P10	292091
15_19		O	P11	PW	View of P11	292092
15_20		O	A2	A	View of A2	292094
15_21		O	S4	K	Example of cracking in kerbs at many piers	292109

Structure Id 7976 Name A.J. Bond Bridge
 Inspection Date 28-OCT-2015 Inspection Level 2 Level 3 Underwater

Film/Exposure Number	Sketch No	Location			Description	Id
		Modification	Group	Component		
15_22		O	P2	PW	Mod-severe cracking at P2 construction joint	292099
15_23		O	P3	PW	Cracking at P3 construction joint	292105
15_24		O	S4	XG1	Cracking in load bearing diaphragm	292106
15_25		O	P4	PW	Cracking at CJ P4	292107
15_26		O	A2	A	Moderate cracking in A2	292096
15_27		O	A2	WW1	Example of cracking in A2 wings	292108
15_28		O	S2	G	Typical condition of girder hinge joints	292120

Pictures

** All images printed for this report.

Id Date

Film / Exposure Number Sketch No

Description

Mod	Category	Number	Comp Code	Comp No
<input type="text" value="O"/>	<input type="text" value="AP"/>	<input type="text" value="1"/>	<input type="text" value="AP"/>	<input type="text"/>



Id Date

Film / Exposure Number Sketch No

Description

Mod	Category	Number	Comp Code	Comp No
<input type="text" value="O"/>	<input type="text" value="S"/>	<input type="text" value="1"/>	<input type="text" value="W"/>	<input type="text"/>



Structure Id 7976

Name A.J. Bond Bridge

Inspection Date 28-OCT-2015

Inspection Level 2

Level 3

Underwater

Pictures

** All images printed for this report.

Id

Date

Film / Exposure Number

Sketch No

Description

Mod Category Number Comp Code Comp No



Id

Date

Film / Exposure Number

Sketch No

Description

Mod Category Number Comp Code Comp No



Id

Date

Film / Exposure Number

Sketch No

Description

Mod Category Number Comp Code Comp No



Structure Id 7976

Name A.J. Bond Bridge

Inspection Date 28-OCT-2015

Inspection Level 2

Level 3

Underwater

Pictures

** All images printed for this report.

Id

Date

Film / Exposure Number

Sketch No

Description

Causeway at AP2

Mod Category Number Comp Code Comp No



Id

Date

Film / Exposure Number

Sketch No

Description

View of A1

Mod Category Number Comp Code Comp No



Id

Date

Film / Exposure Number

Sketch No

Description

View of P2

Mod Category Number Comp Code Comp No



Structure Id 7976 Name A.J. Bond Bridge
 Inspection Date 28-OCT-2015 Inspection Level 2 Level 3 Underwater

Pictures

** All images printed for this report.

Id **Date**

Film / Exposure Number **Sketch No**

Description
View of P3

Mod	Category	Number	Comp Code	Comp No
O	P	3	PW	<input type="text"/>



Id **Date**

Film / Exposure Number **Sketch No**

Description
View of P4

Mod	Category	Number	Comp Code	Comp No
O	P	4	PW	<input type="text"/>



Id **Date**

Film / Exposure Number **Sketch No**

Description
View of P5

Mod	Category	Number	Comp Code	Comp No
O	P	5	PW	<input type="text"/>



Structure Id 7976

Name A.J. Bond Bridge

Inspection Date 28-OCT-2015

Inspection Level 2

Level 3

Underwater

Pictures

** All images printed for this report.

Id

Date

Film / Exposure Number

Sketch No

Description

Mod Category Number Comp Code Comp No



Id

Date

Film / Exposure Number

Sketch No

Description

Mod Category Number Comp Code Comp No



Id

Date

Film / Exposure Number

Sketch No

Description

Mod Category Number Comp Code Comp No



Structure Id 7976 Name A.J. Bond Bridge
 Inspection Date 28-OCT-2015 Inspection Level 2 Level 3 Underwater

Pictures

** All images printed for this report.

Id Date

Film / Exposure Number Sketch No

Description

Mod	Category	Number	Comp Code	Comp No
O	P	9	PW	<input type="text"/>



Id Date

Film / Exposure Number Sketch No

Description

Mod	Category	Number	Comp Code	Comp No
O	P	10	PW	<input type="text"/>



Id Date

Film / Exposure Number Sketch No

Description

Mod	Category	Number	Comp Code	Comp No
O	P	11	PW	<input type="text"/>



Structure Id 7976

Name A.J. Bond Bridge

Inspection Date 28-OCT-2015

Inspection Level 2

Level 3

Underwater

Pictures

** All images printed for this report.

Id

Date

Film / Exposure Number

Sketch No

Description

Mod Category Number Comp Code Comp No



Id

Date

Film / Exposure Number

Sketch No

Description

Mod Category Number Comp Code Comp No



Id

Date

Film / Exposure Number

Sketch No

Description

Mod Category Number Comp Code Comp No



Structure Id 7976 Name A.J. Bond Bridge
 Inspection Date 28-OCT-2015 Inspection Level 2 Level 3 Underwater

Pictures

** All images printed for this report.

Id **Date**

Film / Exposure Number **Sketch No**

Description

Mod	Category	Number	Comp Code	Comp No
<input type="text" value="O"/>	<input type="text" value="P"/>	<input type="text" value="3"/>	<input type="text" value="PW"/>	<input type="text"/>

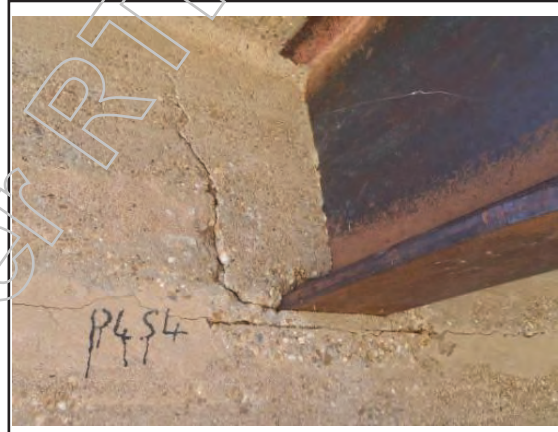


Id **Date**

Film / Exposure Number **Sketch No**

Description

Mod	Category	Number	Comp Code	Comp No
<input type="text" value="O"/>	<input type="text" value="S"/>	<input type="text" value="4"/>	<input type="text" value="XG"/>	<input type="text" value="1"/>



Id **Date**

Film / Exposure Number **Sketch No**

Description

Mod	Category	Number	Comp Code	Comp No
<input type="text" value="O"/>	<input type="text" value="P"/>	<input type="text" value="4"/>	<input type="text" value="PW"/>	<input type="text"/>



Structure Id 7976

Name A.J. Bond Bridge

Inspection Date 28-OCT-2015

Inspection Level 2

Level 3

Underwater

Pictures

** All images printed for this report.

Id

Date

Film / Exposure Number

Sketch No

Description

Mod Category Number Comp Code Comp No



Id

Date

Film / Exposure Number

Sketch No

Description

Mod Category Number Comp Code Comp No



Id

Date

Film / Exposure Number

Sketch No

Description

Mod Category Number Comp Code Comp No



Structure Condition Inspection Report

B2/1

Sheet

1 Of 7

Structure Id 7976

Name A.J. Bond Bridge

Crossing Name Gilbert River

Alt. Name _____

Structure Type Bridge

Owner MR DEPARTMENT OF MAIN RO

Construction Type Girder/Beam

District 403 Far North

Construction Material Steel

LGA Id 226 ETHERIDGE SHIRE COUNC

Inspector Steve W Von Deest

Date 28-OCT-2015

Inspection Level 2 Programmed

Undersize Components

Level 3 Exceptional

Underwater

Road Section

Start

End

TDist

Id	Description	S	Cway	S	RPC	Dist	RPC	Dist	Start	End
92B	CROYDON - GEORG C	1	C	4	0.000	4	0.209	73.210	73.419	

Overall Ratings

1	2	3	4	5	Comments
---	---	---	---	---	----------

Original Structure (O)

X

Bridge is in fair-poor condition.

Cracking at construction joints on pier walls 2 - 11. Little to no change since first reported in 2001. Cracking appears to be non-structural. Monitoring of cracking is recommended.

Steel plates at pier joints were removed prior to 2009 and joints left open. Introduction of pourable joints has been recommended. Joints have been renumbered to match Figure 1.1 Appendix G of the Bridge Inspection Manual.

Steel girders appear to be losing their protective coating with minor surface corrosion appearing in isolation. Probable red lead present. Consider coating girders with an anti-corrosive. Consider also cleaning out and treating hinge joints in spans 2, 4, 6, 8, 10 and 12. Many missing bolts from hinge covers also require replacement.

Width markers at AP1 are damaged or missing. Replacement of width markers and introduction of a call sign is recommended.

Cracking on outside of kerbs noted over many piers. This should be monitored.

Original design drawings show chainage reversed and 1 span missing.

Widening (WLn, WRn), Lengthening (L1, L2), Raised (Ra), Redecked (Re), Shortening (S1, S2), Strengthening (St)

Structure Condition Inspection Report

B2/2

Sheet

2 Of 7

Structure Id 7976

Name A.J. Bond Bridge

Inspection Date 28-OCT-2015

Inspection Level 2 Level 3 Underwater

Component Location				Exposure Class	Quantity	Unit	Quantity Per Condition State				Maintenance Req'd	Comments * Location of item/condition * Description of defects by location type, magnitude, extent * References of sketches and photos (Roll/Exposure Nos)
Modification	Group	Component	Standard				1	2	3	4		
O	AP1	AP	70O	2	1.0	EACH		1.0			X	
Downhill slope to transition. Fair condition (15_01). Width marker at side 1 pushed over and side 2 sign missing (15_05). Replacement signs should be erected to be clear of wide loads. Consider also placement of call signs on bridge approaches.												
O	AP1	GR	72S	2	2.0	EACH	2.0					New GR. No connection to bridge.
O	AP1	PRO	53O	2	120.0	M2		120.0				Fair condition. Concrete channeling at side 2.
O	A1	K	3C	2	8.0	LINM		8.0				Minor spalls to kerbs both sides from vehicle contact (15_05).
O	A1	J1	15O	2	3.4	LINM		3.4				Minor-moderate cracking in surfacing over joint.
O	S1	K	3C	2	22.4	LINM		22.4			X	
Kerbs have black marks from tire contact. Generally fair. Consider placing more delineation. No containment across bridge. Minor cracking in outside of kerbs over P2 (15_21).												
O	S1	WS	1C	2	38.0	M2		38.0				Some loss of fines. Minor transverse cracks at MS and at E2.
O	P1	J1	14S	2	3.4	LINM				3.4		
Steel plate has been removed (15_06). Nosings fair. Gap 22mm (at side 1) to 21mm (at side 2). Ambient temperature at time of inspection 40 degrees celsius. Recommend introduction of pourable joint seal.												
O	S2	K	3C	2	36.4	LINM		36.4			X	
Hairline-minor transverse cracking both sides. Kerbs have black marks from tire contact. Consider placing more delineation. Minor cracking in outside of kerbs over P2 and P3 (15_21).												
O	S2	WS	1C	2	62.2	M2		62.2				
O	P2	J1	14S	2	3.4	LINM				3.4		Steel plate removed (15_06). Nosings generally fair. Gap 30mm to 28mm. Consider introduction of pourable joint.
O	S3	K	3C	2	36.4	LINM		36.4			X	
Minor transverse cracking both sides. Kerbs have black marks from tire contact. Consider placing more delineation. Minor cracking in outside of kerbs over P3 and P4 (15_21).												
O	S3	WS	1C	2	61.8	M2		61.8				Minor transverse cracking throughout.
O	P3	J1	14S	2	3.4	LINM				3.4		Steel plate removed (15_06). Gap 25mm - 20mm. Minor spalling of nosing side 2. Recommend introduction of pourable joint.
O	S4	K	3C	2	36.6	LINM		36.6			X	
Minor-moderate transverse cracking at MS. Kerbs have black marks from tire contact. Consider placing more delineation. Minor cracking in outside of kerbs over P4 (15_21).												
O	S4	WS	1C	2	62.2	M2		62.2				
O	P4	J1	14S	2	3.4	LINM				3.4		Steel plate removed (15_06). Nosings fair. Gap 28mm - 36mm. Recommend introduction of pourable joint.
O	S5	K	3C	2	36.6	LINM		36.6			X	
Minor spalls to outside face of K2 from debris. Kerbs have black marks from tire contact. Consider placing more delineation. Minor cracking in outside of kerbs over P4 (15_21).												
O	S5	WS	1C	2	62.2	M2		62.2				
O	P5	J1	14S	2	3.4	LINM				3.4		Steel plate removed (15_06). Nosings fair. Gap 28mm - 36mm. Recommend introduction of a pourable joint.
O	S6	K	3C	2	37.2	LINM		37.2			X	
1 minor spall at K2 MS from vehicle contact. Kerbs have black marks from tire contact. Consider placing more delineation. Minor cracking in outside of kerbs over P6 and (15_21).												
O	S6	WS	1C	2	63.2	M2		63.2				

Structure Condition Inspection Report

B2/2

Sheet

3 Of 7

Structure Id 7976

Name A.J. Bond Bridge

Inspection Date 28-OCT-2015

Inspection Level 2 Level 3 Underwater

Component Location				Exposure Class	Quantity	Unit	Quantity Per Condition State				Maintenance Req'd	Comments * Location of item/condition * Description of defects by location type, magnitude, extent * References of sketches and photos (Roll/Exposure Nos)
Modification	Group	Component	Standard				1	2	3	4		
O	P6	J1	14 S	2	3.4	LINM				3.4		Steel plate removed (15_06). Nosings fair - some boniness. Gap 26mm - 20mm. Recommend introduction of a pourable joint.
O	S7	K	3 C	2	36.0	LINM		36.0			X	
Minor spall from vehicle contact K1. Kerbs have black marks from tire contact. Consider placing more delineation. Minor cracking in outside of kerbs over P6 and P7(15_21).												
O	S7	WS	1 C	2	61.2	M2		61.2				
O	P7	J1	14 S	2	3.4	LINM				3.4		
Steel plate removed (15_06). Minor spalls to nosing repairs (15_07). Gap 24mm - 28mm. Recommend introduction of a pourable joint.												
O	S8	K	3 C	2	36.4	LINM		36.4			X	
Kerbs have black marks from tire contact. Consider placing more delineation. Minor cracking in outside of kerbs over P7 and P8 (15_21).												
O	S8	WS	1 C	2	61.8	M2		61.8				
O	P8	J1	14 S	2	3.4	LINM				3.4		
Steel plate removed (15_06). Minor spalls to nosing under wheel paths. Gap 35mm-27mm. Recommend introduction of a pourable joint.												
O	S9	K	3 C	2	37.0	LINM		37.0				
Minor-moderate cracking over pier 9. Moderate cracking over P8. Kerbs have black marks from tire contact. Consider placing more delineation. Minor cracking in outside of kerbs over P8 (15_21).												
O	S9	WS	1 C	2	63.0	M2		63.0				
O	P9	J1	14 S	2	3.4	LINM				3.4		Steel plate removed (15_06). Minor spalls to nosings. Gap 27mm - 29mm. Recommend introduction of a pourable joint.
O	S10	K	3 C	2	36.2	LINM		36.2			X	Kerbs have black marks from tire contact. Consider placing more delineation.
O	S10	WS	1 C	2	61.6	M2		61.6				
O	P10	J1	14 S	2	3.4	LINM				3.4		
Steel plate removed (15_06). Boniness and minor spalls to nosings. Gap 50mm - 22mm. Recommend introduction of a pourable joint.												
O	S11	K	3 C	2	36.4	LINM		36.4			X	Minor transverse cracking both sides. Minor cracking in outside of kerbs over P10 and P11 (15_21).
O	S11	WS	1 C	2	61.8	M2		61.8				Exposed reo in a few areas along side 2. Minor transverse cracking.
O	P11	J1	14 S	2	3.4	LINM				3.4		Steel plate removed (15_06). Nosings fair. Gap 30mm - 30mm. Recommend introduction of a pourable joint.
O	S12	K	3 C	2	31.2	LINM		31.2			X	
Minor crack in K1 at E2. Kerbs in contact with 'side keepers'. Minor spalls due to movement both sides. Kerbs have black marks from tire contact. Consider placing more delineation. Minor cracking in outside of kerbs over P11 (15_21).												
O	S12	WS	1 C	2	53.0	M2		53.0				Minor transverse cracking MS.
O	A2	J1	15 C	2	3.4	LINM				3.4		
O	AP2	AP	70 O	2	1.0	EACH				1.0		
Bridge ends with a causeway of rubble masonry construction with concrete slabs as the running surface and large kerbs (270mm x 450mm) (15_08). Moderate-severe cracking between slabs on causeway - consider sealing during service. Minor-moderate cracking in kerbs at all weepholes.												
O	AP2	PRO	53 O	2	80.0	M2		80.0				No guardrail present.
O	A1	A	50 C	2	1.0	EACH				1.0		Fair condition (15_09).
O	A1	B	40 O	2	2.0	EACH	X	X	X	X		Bearings encased in concrete (15_09).

Structure Condition Inspection Report

B2/2

Sheet

4 Of 7

Structure Id 7976

Name A.J. Bond Bridge

Inspection Date 28-OCT-2015

Inspection Level 2 Level 3 Underwater

Component Location				Exposure Class	Quantity	Unit	Quantity Per Condition State				Maintenance Req'd	Comments * Location of item/condition * Description of defects by location type, magnitude, extent * References of sketches and photos (Roll/Exposure Nos)
Modification	Group	Component	Standard				1	2	3	4		
O	A1	CAP	59C	2	1.0	EACH	X	X	X	X		Buried and unseen (15_09).
O	A1	P	56C	2	8.0	EACH	X	X	X	X		Buried and unseen (15_09).
O	A1	WW	51C	2	2.0	EACH		2.0				Fair condition. WW2 largely obscured by silt build up (15_09).
O	S1	D	20C	2	44.0	M2		44.0				Hairline-0.1mm cracking in isolation.
O	S1	G	22S	2	2.0	EACH		2.0				Protective coating wearing thin - probable red lead on girders. Minor corrosion in a few isolated spots.
O	S1	XG	32C	2	2.0	EACH		2.0				Located at A1 and P1.
O	S1	XG	31C	2	1.0	EACH		1.0				Fair condition.
O	S1	W	71O	2	1.0	EACH		1.0				Build up of sediment in S1 (15_09) with localised scour at E2 upstream side.
O	P1	PW	58C	2	17.4	M2		17.4				
O	P1	B	40O	2	2.0	EACH	X	X	X	X		Bearings encased in concrete (15_03).
O	P1	P	56C	2	2.0	EACH	X	X	X	X		Buried and unseen (15_03).
O	S2	D	20C	2	80.0	M2		80.0				Generally fair. Patch repairs are holding.
O	S2	G	22S	2	2.0	EACH		2.0			X	
Lack of protective coating. Minor surface corrosion. 14 bolts missing from hinge cover plates - recommend replacing during next service. Consider cleaning and treating hinge joints (15_28).												
O	S2	XG	31C	2	6.0	EACH		6.0				
O	S2	XG	32C	2	1.0	EACH		1.0				Located at P2.
O	S2	W	71O	2	1.0	EACH		1.0				Localised build up at E1 both sides.
O	P2	PW	58C	2	27.4	M2		25.4	2.0			
Moderate-severe cracking at construction joint between top of pier wall and load-bearing diaphragm (15_10, 15_22)(See also 2009 sketches). No discernible change to cracking since first reported in 2001. Monitor for change. Moderate water abrasion to pier wall.												
O	P2	B	40O	2	2.0	EACH		2.0				Encased in concrete (15_10).
O	P2	P	56C	2	2.0	EACH	X	X	X	X		Buried and unseen (15_10).
O	S3	D	20C	2	80.0	M2		80.0				Generally fair. Patch repairs D3 E2 holding.
O	S3	G	22S	2	2.0	EACH		2.0				Lack of protective coating. Minor surface corrosion.
O	S3	XG	31C	2	2.0	EACH		2.0				Loss of fines in underside of XG1.
O	S3	XG	32C	2	1.0	EACH		1.0				Located at P3 (15_11).
O	S3	W	71O	2	1.0	EACH		1.0				
O	P3	PW	58C	2	27.4	M2		25.4	2.0			
Moderate-severe cracking at construction joint between top of pier wall and load-bearing diaphragm (15_11, 15_23)(See also 2009 sketches). Monitor cracking. Moderate water abrasion.												
O	P3	B	40O	2	2.0	EACH	X	X	X	X		Encased in concrete.
O	P3	P	56C	2	2.0	EACH	X	X	X	X		Buried and unseen (15_11).

Structure Condition Inspection Report

B2/2

Sheet

5 Of 7

Structure Id 7976

Name A.J. Bond Bridge

Inspection Date 28-OCT-2015

Inspection Level 2 Level 3 Underwater

Component Location				Exposure Class	Quantity	Unit	Quantity Per Condition State				Maintenance Req'd	Comments * Location of item/condition * Description of defects by location type, magnitude, extent * References of sketches and photos (Roll/Exposure Nos)
Modification	Group	Component	Standard				1	2	3	4		
O	S4	D	20C	2	80.0	M2		80.0				
O	S4	G	22S	2	2.0	EACH		2.0			X	
Lack of protective coating. Minor surface corrosion. Hinge cover plates missing 7 bolts - replace during next service. Consider cleaning and treating hinge joints (15_28).												
O	S4	XG	31C	2	6.0	EACH		6.0				
O	S4	XG	32C	2	1.0	EACH			1.0			Located at P4 (15_12). Cracking/drumminess at G1 (15_24). No change since 2009. Monitor.
O	S4	W	71O	2	1.0	EACH		1.0				
O	P4	PW	58C	2	27.4	M2		25.4	2.0			
Moderate-severe cracking at construction joint between top of pier wall and load-bearing diaphragm (15_12, 15_25)(See also 2009 sketches). Moderate water abrasion to PW. Monitor cracking.												
O	P4	B	40O	2	2.0	EACH	X	X	X	X		Bearings encased in concrete.
O	P4	P	56C	2	2.0	EACH	X	X	X	X		Buried and unseen (15_12).
O	S5	D	20C	2	80.0	M2		80.0				Fair.
O	S5	G	22S	2	2.0	EACH		2.0				Lack of protective coating. Minor surface corrosion.
O	S5	XG	31C	2	2.0	EACH		2.0				Fair. Patch repairs holding.
O	S5	XG	32C	2	1.0	EACH		1.0				Located at P5 (15_13). Cracking and drummy area at G1.
O	S5	W	71O	2	1.0	EACH		1.0				Localised build up of sediment at E2 upstream side.
O	P5	PW	58C	2	27.4	M2		25.4	2.0			
Moderate-severe cracking at construction joint between top of pier wall and load-bearing diaphragm (15_13)(See also 2009 sketches). Moderate water abrasion to PW. Monitor cracking.												
O	P5	B	40O	2	2.0	EACH	X	X	X	X		Encased in concrete (15_13).
O	P5	P	56C	2	2.0	EACH	X	X	X	X		Buried and unseen (15_13).
O	S6	D	20C	2	80.0	M2		80.0				
O	S6	G	22S	2	2.0	EACH		2.0			X	
Lack of protective coating. Minor surface corrosion. Hinge plate covers missing total of 7 bolts. Consider replacement during next service. Consider cleaning and treating hinge joints (15_28).												
O	S6	XG	31C	2	6.0	EACH		6.0				Patch repairs holding.
O	S6	XG	32C	2	1.0	EACH		1.0				Located at P6 (15_14).
O	S6	W	71O	2	1.0	EACH		1.0				Localised build up at E2 downstream side.
O	P6	PW	58C	2	27.4	M2		25.4	2.0			
Moderate-severe cracking at construction joint between top of pier wall and load-bearing diaphragm (15_14)(See also 2009 sketches). Moderate water abrasion to PW. Monitor cracking.												
O	P6	B	40O	2	2.0	EACH	X	X	X	X		Encased in concrete (15_14).
O	P6	P	56C	2	2.0	EACH	X	X	X	X		Buried and unseen (15_14).
O	S7	D	20C	2	80.0	M2		80.0				

Structure Condition Inspection Report

B2/2

Sheet

6 Of 7

Structure Id 7976

Name A.J. Bond Bridge

Inspection Date 28-OCT-2015

Inspection Level 2 Level 3 Underwater

Component Location				Exposure Class	Quantity	Unit	Quantity Per Condition State				Maintenance Req'd	Comments * Location of item/condition * Description of defects by location type, magnitude, extent * References of sketches and photos (Roll/Exposure Nos)
Modification	Group	Component	Standard				1	2	3	4		
O	S7	G	22S	2	2.0	EACH		2.0				Lack of protective coating. Minor surface corrosion.
O	S7	XG	31C	2	2.0	EACH		2.0				
O	S7	XG	32C	2	1.0	EACH		1.0				Located at P7 (15_15).
O	S7	W	71O	2	1.0	EACH			1.0			Moderate build up at E2. Monitor.
O	P7	PW	58C	2	27.4	M2		25.4	2.0			
Moderate-severe cracking at construction joint between top of pier wall and load-bearing diaphragm (15_15)(See also 2009 sketches). Moderate water abrasion to PW. Monitor cracking.												
O	P7	B	40O	2	2.0	EACH	X	X	X	X		Encased in concrete (15_15).
O	P7	P	56C	2	2.0	EACH	X	X	X	X		Buried and unseen (15_15).
O	S8	D	20C	2	80.0	M2		80.0				
O	S8	G	22S	2	2.0	EACH		2.0			X	
Lack of protective coating. Minor surface corrosion. Hinge cover plates missing total of 7 bolts - consider replacing during next service. Consider cleaning and treating hinge joints (15_28).												
O	S8	XG	31C	2	6.0	EACH		6.0				Patch repairs successful.
O	S8	XG	32C	2	1.0	EACH		1.0				Located at P8 (15_16).
O	S8	W	71O	2	1.0	EACH			1.0			Moderate build up across span upstream side. Monitor.
O	P8	PW	58C	2	27.4	M2		25.4	2.0			
Moderate-severe cracking at construction joint between top of pier wall and load-bearing diaphragm (15_16)(See also 2009 sketches). Moderate water abrasion to PW. Monitor cracking.												
O	P8	B	40O	2	2.0	EACH	X	X	X	X		Encased in concrete (15_16).
O	P8	P	56C	2	2.0	EACH	X	X	X	X		Buried and unseen (15_16).
O	S9	D	20C	2	80.0	M2		80.0				
O	S9	G	22S	2	2.0	EACH		2.0				Lack of protective coating. Minor surface corrosion.
O	S9	XG	31C	2	2.0	EACH		2.0				
O	S9	XG	32C	2	1.0	EACH		1.0				Located at P9 (15_17).
O	S9	W	71O	2	1.0	EACH			1.0			Localised build up at MS downstream side.
O	P9	PW	58C	2	27.4	M2		25.4	2.0			
Moderate-severe cracking at construction joint between top of pier wall and load-bearing diaphragm (15_17)(See also 2009 sketches). Moderate water abrasion to PW. Monitor cracking.												
O	P9	B	40O	2	2.0	EACH	X	X	X	X		Encased in concrete (15_17).
O	P9	P	56C	2	2.0	EACH	X	X	X	X		Buried and unseen (15_17).
O	S10	D	20C	2	80.0	M2		80.0				Minor exposed reo in D2 at E1. Boniness near E1. Patch repairs successful.
O	S10	G	22S	2	2.0	EACH		2.0			X	
Lack of protective coating. Minor surface corrosion. Hinge cover plates missing total of 2 bolts - consider replacement during next service. Consider cleaning and treating hinge joints (15_28).												

Structure Condition Inspection Report

B2/2

Sheet

7 Of 7

Structure Id 7976

Name A.J. Bond Bridge

Inspection Date 28-OCT-2015

Inspection Level 2 Level 3 Underwater

Component Location				Exposure Class	Quantity	Unit	Quantity Per Condition State				Maintenance Req'd	Comments * Location of item/condition * Description of defects by location type, magnitude, extent * References of sketches and photos (Roll/Exposure Nos)
Modification	Group	Component	Standard				1	2	3	4		
O	S10	XG	31C	2	6.0	EACH		6.0				
O	S10	XG	32C	2	1.0	EACH		1.0				Located at P10 (15_18).
O	S10	W	71O	2	1.0	EACH		1.0				
O	P10	PW	58C	2	27.4	M2		25.4	2.0			
Moderate-severe cracking at construction joint between top of pier wall and load-bearing diaphragm (15_18)(See also 2009 sketches). Moderate water abrasion to PW. Monitor cracking.												
O	P10	B	40O	2	2.0	EACH	X	X	X	X		Encased in concrete (15_18).
O	P10	P	56C	2	2.0	EACH	X	X	X	X		Buried and unseen (15_18).
O	S11	D	20C	2	80.0	M2		80.0				
O	S11	G	22S	2	2.0	EACH		2.0				Lack of protective coating. Minor surface corrosion.
O	S11	XG	31C	2	2.0	EACH		2.0				
O	S11	XG	32C	2	1.0	EACH		1.0				Located at P11 (15_19).
O	S11	W	71O	2	1.0	EACH		1.0				
O	P11	PW	58C	2	27.4	M2		25.4	2.0			
Moderate-severe cracking at construction joint between top of pier wall and load-bearing diaphragm (15_19)(See also 2009 sketches). Moderate water abrasion to PW. Monitor cracking.												
O	P11	B	40O	2	2.0	EACH	X	X	X	X		Encased in concrete (15_19).
O	P11	P	56C	2	2.0	EACH	X	X	X	X		Buried and unseen (15_19).
O	S12	D	20C	2	60.0	M2		60.0				
O	S12	G	22S	2	2.0	EACH		2.0			X	
Lack of protective coating. Minor surface corrosion. Hinge cover plates missing total of 9 bolts - consider replacement during next service. Consider cleaning and treating hinge joints (15_28).												
O	S12	XG	31C	2	3.0	EACH		3.0				Patch repairs successful.
O	S12	XG	32C	2	1.0	EACH		1.0				Located at A2 (15_20).
O	S12	W	71O	2	1.0	EACH		1.0				
O	A2	A	50C	2	1.0	EACH		1.0				Moderate cracking up to 0.5mm under both girders (15_20, 15_26)(see also 2009 sketch). No change since 2009 report.
O	A2	B	40O	2	2.0	EACH	X	X	X	X		Encased in concrete (15_20).
O	A2	F	59C	2	1.0	EACH	X	X	X	X		Buried and unseen (15_20).
O	A2	WW	51C	2	2.0	EACH			2.0			
Scouring at base of WW2 (15_20). Severe cracks in both wings up to 3mm (15_27) - similar to 2009 report. Recommend sealing cracks with a chemical grout.												