

# Maritime Safety Queensland



*Burrum River, Burrum Heads*

# Beacon to Beacon Guide

## Hervey Bay

### Published by

Maritime Safety Queensland

© Copyright The State of Queensland  
(Department of Transport and Main Roads) 2023



To view a copy of this licence, visit  
<https://creativecommons.org/licenses/by/4.0/>

### For commercial use terms and conditions

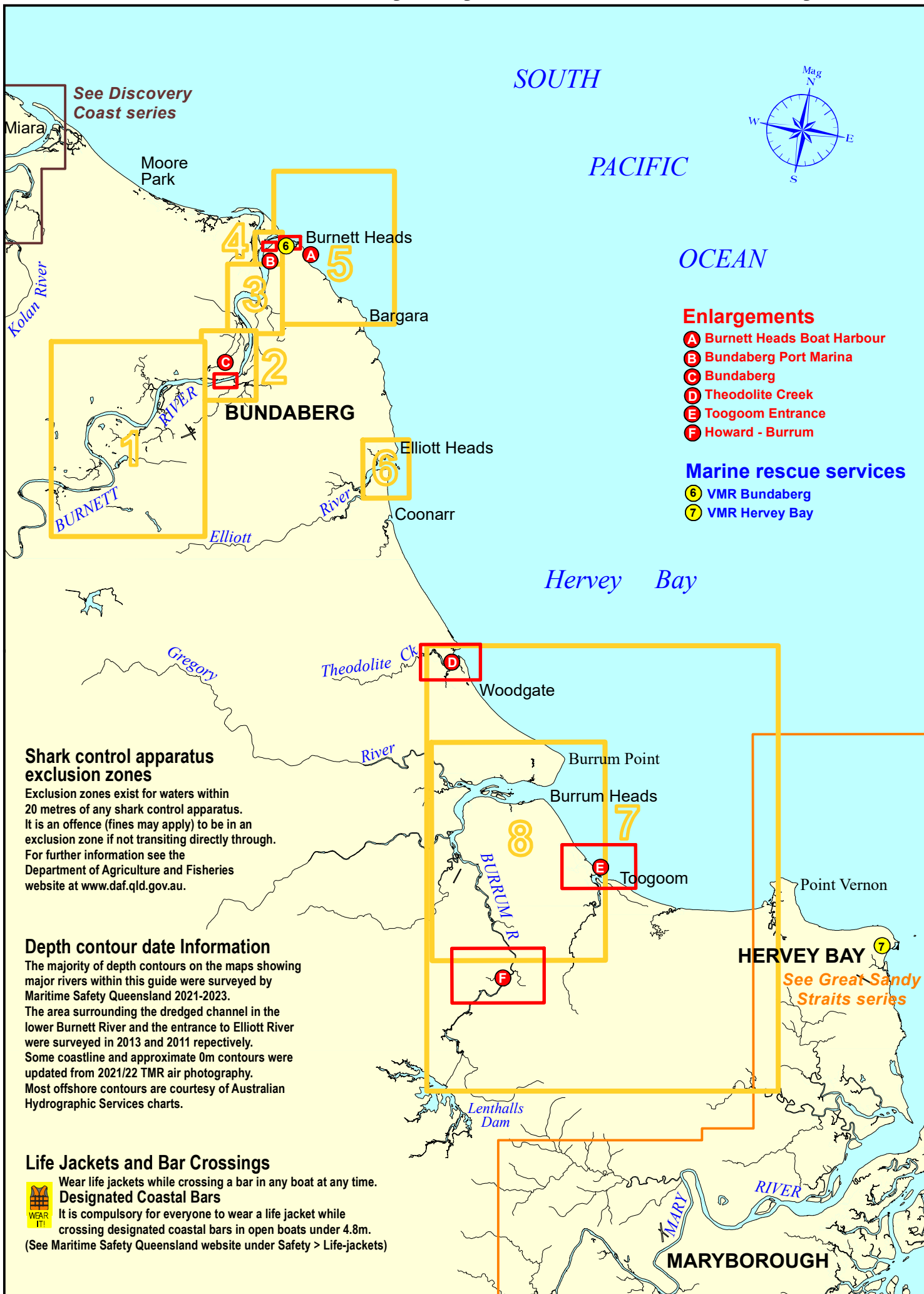
Please visit the Maritime Safety Queensland website at [www.msq.qld.gov.au](http://www.msq.qld.gov.au)

### 'How to' use this guide

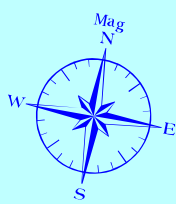
Use this Beacon to Beacon Guide with the 'How to' and legend booklet available from [www.msq.qld.gov.au](http://www.msq.qld.gov.au)



**Queensland  
Government**



See Discovery Coast series



OCEAN

**Enlargements**

- A** Burnett Heads Boat Harbour
- B** Bundaberg Port Marina
- C** Bundaberg
- D** Theodolite Creek
- E** Toogoom Entrance
- F** Howard - Burrum

**Marine rescue services**

- 6** VMR Bundaberg
- 7** VMR Hervey Bay


**Shark control apparatus exclusion zones**

Exclusion zones exist for waters within 20 metres of any shark control apparatus. It is an offence (fines may apply) to be in an exclusion zone if not transiting directly through. For further information see the Department of Agriculture and Fisheries website at [www.daf.qld.gov.au](http://www.daf.qld.gov.au).

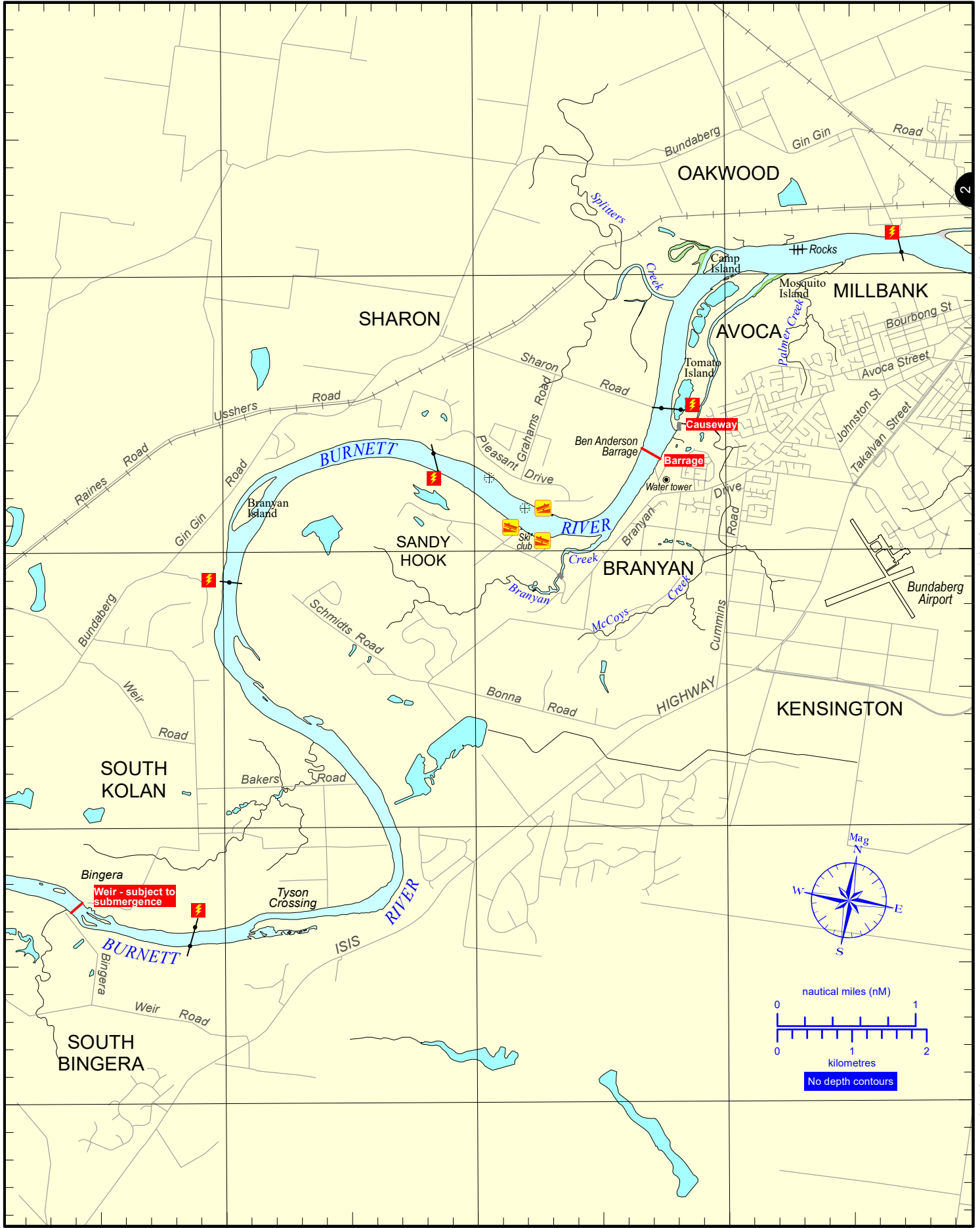
**Depth contour date Information**

The majority of depth contours on the maps showing major rivers within this guide were surveyed by Maritime Safety Queensland 2021-2023. The area surrounding the dredged channel in the lower Burnett River and the entrance to Elliott River were surveyed in 2013 and 2011 respectively. Some coastline and approximate 0m contours were updated from 2021/22 TMR air photography. Most offshore contours are courtesy of Australian Hydrographic Services charts.

**Life Jackets and Bar Crossings**


 Wear life jackets while crossing a bar in any boat at any time.  
**Designated Coastal Bars**  
 It is compulsory for everyone to wear a life jacket while crossing designated coastal bars in open boats under 4.8m.  
 (See Maritime Safety Queensland website under Safety > Life-jackets)

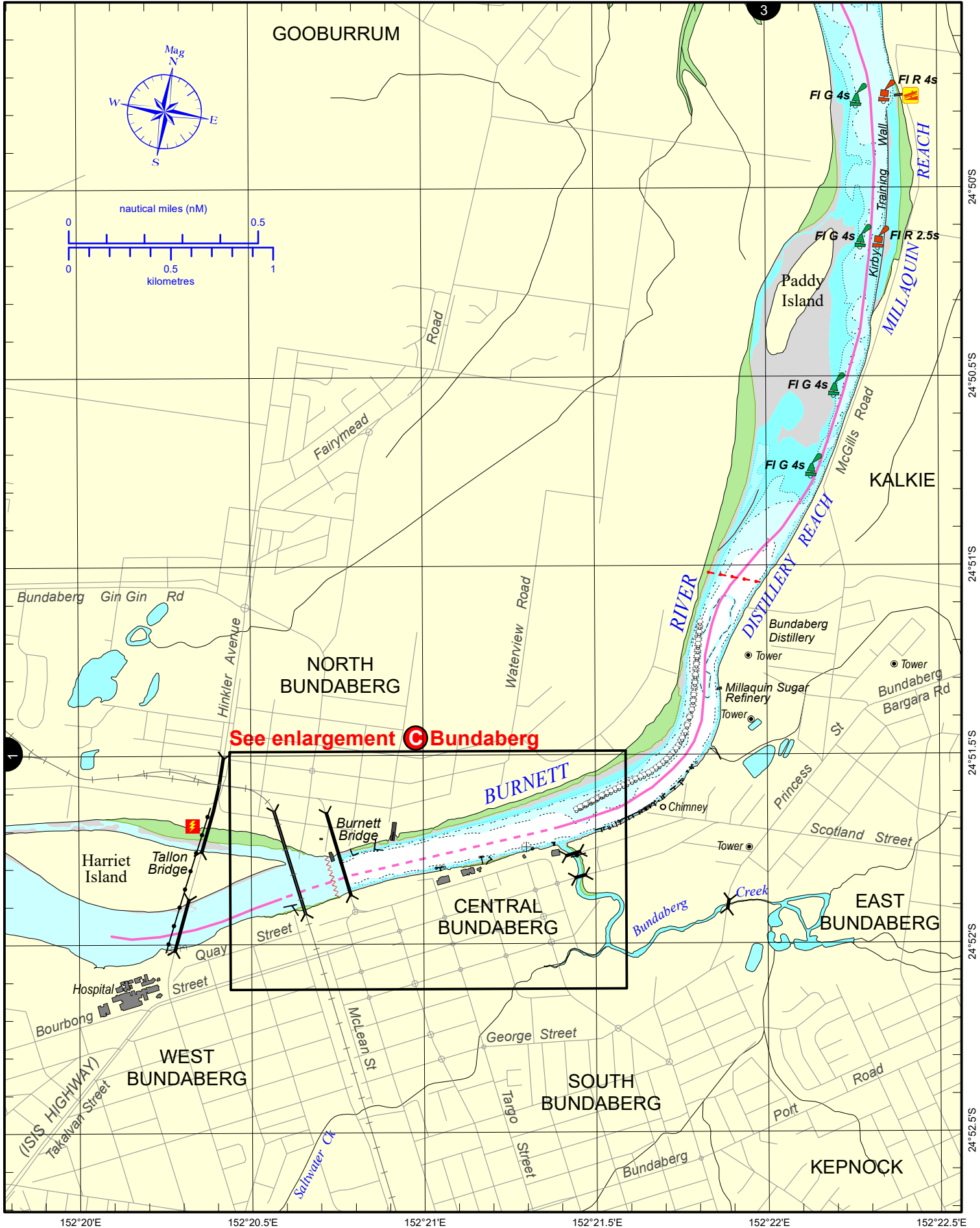
See Great Sandy Straits series



**Always keep a proper lookout when boating. Exercise care at all times.**  
**Look up and live for power and cable crossings that may not be shown on these maps due to scale or recent construction.**  
**CAUTION:** Limited or no depth contour data is available for these waters. (Refer to the Key Sheet for this guide to determine date of survey information).  
 Note that depths may change following floods..  
**Exercise care when travelling outside suggested navigation tracks.**  
 © Copyright The State of Queensland 2023  
 Queensland Department of Transport and Main Roads - Maritime Safety Queensland.  
 To reproduce any map within this series, see terms and conditions at Maritime Safety Queensland's website ([www.msq.qld.gov.au](http://www.msq.qld.gov.au))



Nautical information current to 31 May 2023

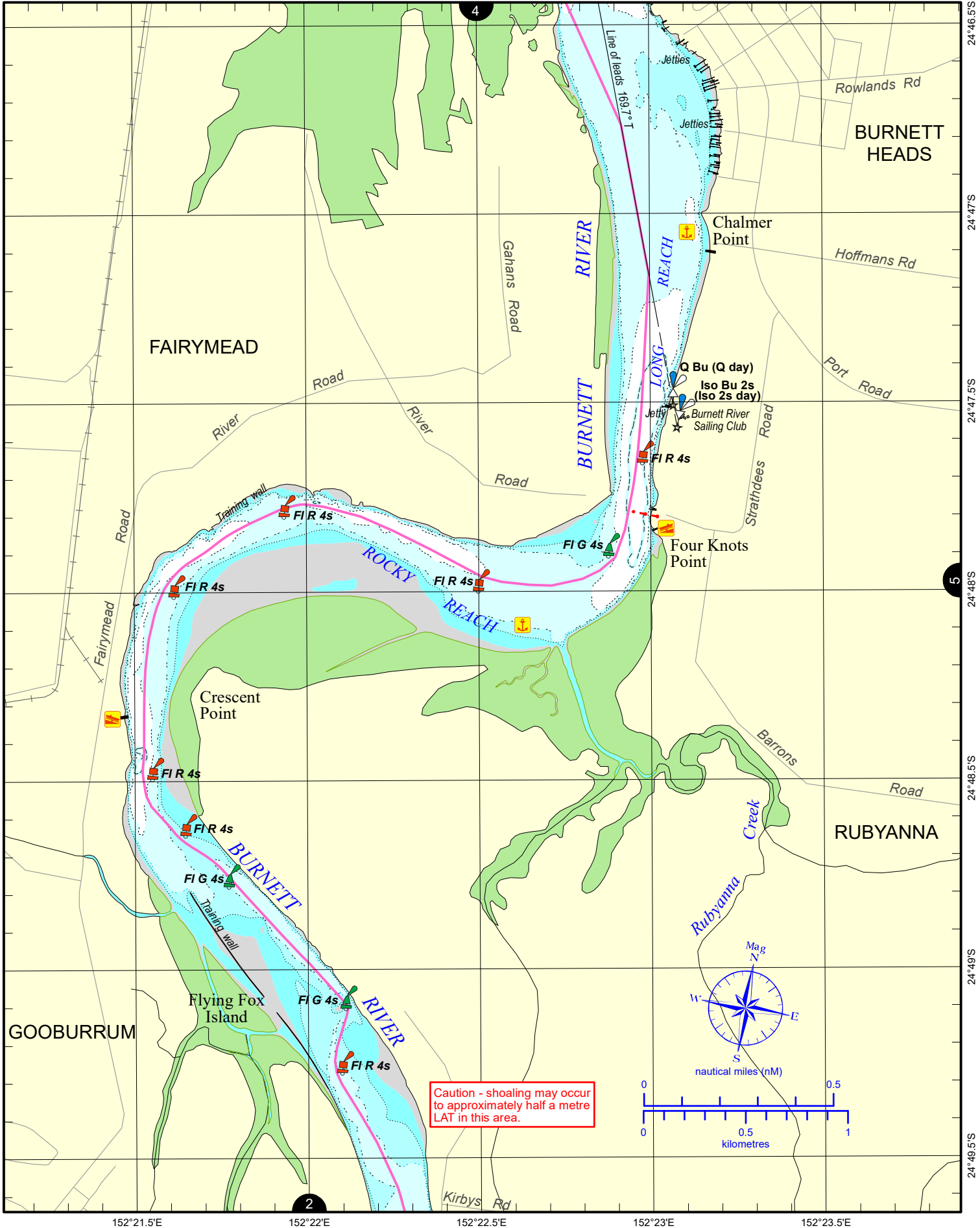
  
**Queensland Government**



Always keep a proper lookout when boating. Exercise care at all times.  
 Look up and live for power and cable crossings that may not be shown on these maps due to scale or recent construction.  
**CAUTION:** Limited depth contour data is available for part of these waters. (Refer to the Key Sheet for this guide to determine date of survey information).  
 Note that depths may change following floods.  
 Exercise care when travelling outside suggested navigation tracks.  
 © Copyright The State of Queensland 2023  
 Queensland Department of Transport and Main Roads - Maritime Safety Queensland.  
 To reproduce any map within this series, see terms and conditions at Maritime Safety Queensland's website ([www.msq.qld.gov.au](http://www.msq.qld.gov.au))

Nautical information current to 31 May 2023



Caution - shoaling may occur to approximately half a metre LAT in this area.

Always keep a proper lookout when boating. Exercise care at all times.

Look up and live for power and cable crossings that may not be shown on these maps due to scale or recent construction.

CAUTION: For depth contour date information, refer to the Key Sheet for this guide.

Note that depths may change following floods.

Exercise care when travelling outside suggested navigation tracks.

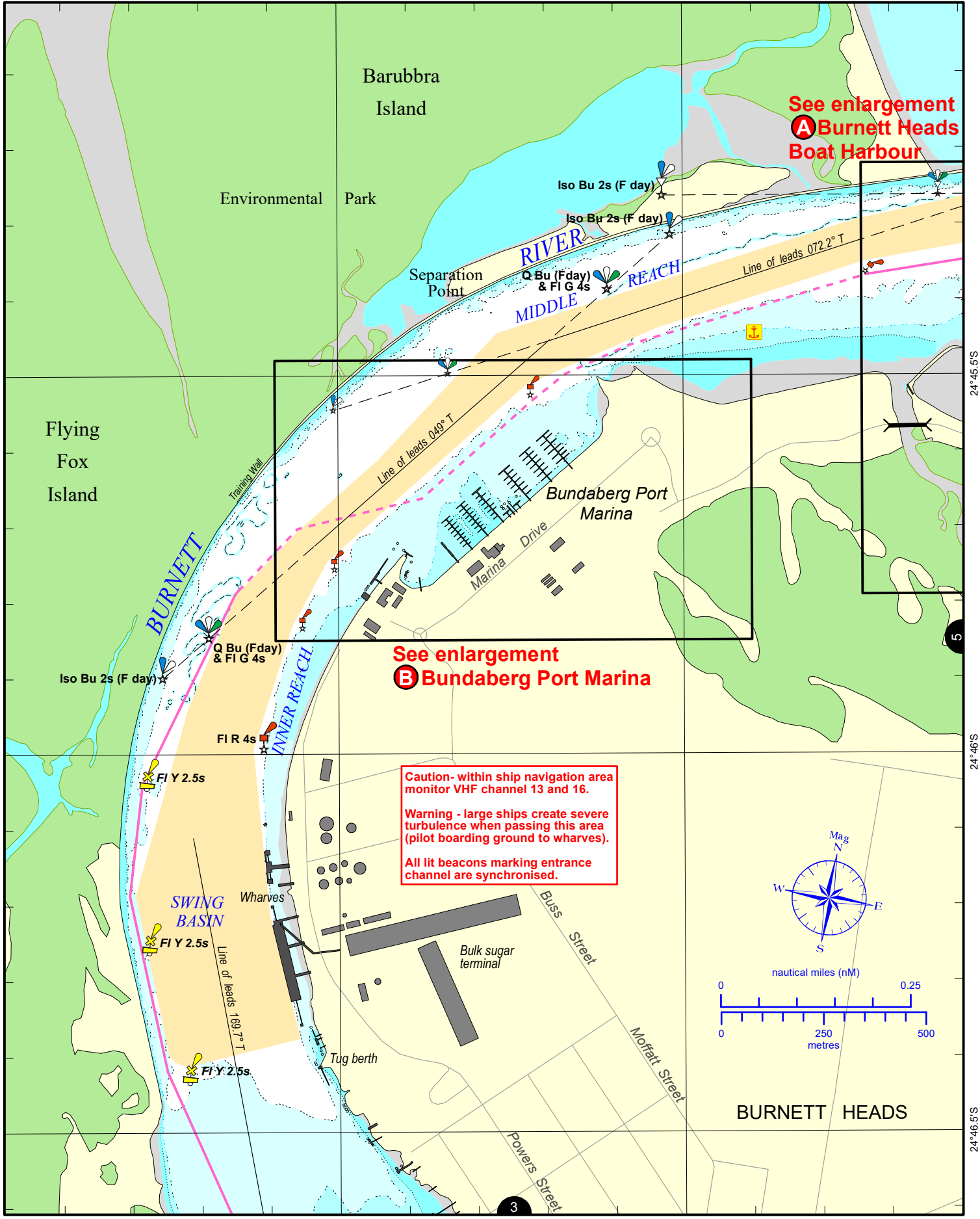
© Copyright The State of Queensland 2023

Queensland Department of Transport and Main Roads - Maritime Safety Queensland.

To reproduce any map within this series, see terms and conditions at Maritime Safety Queensland's website ([www.msq.qld.gov.au](http://www.msq.qld.gov.au))

Nautical information current to 31 May 2023



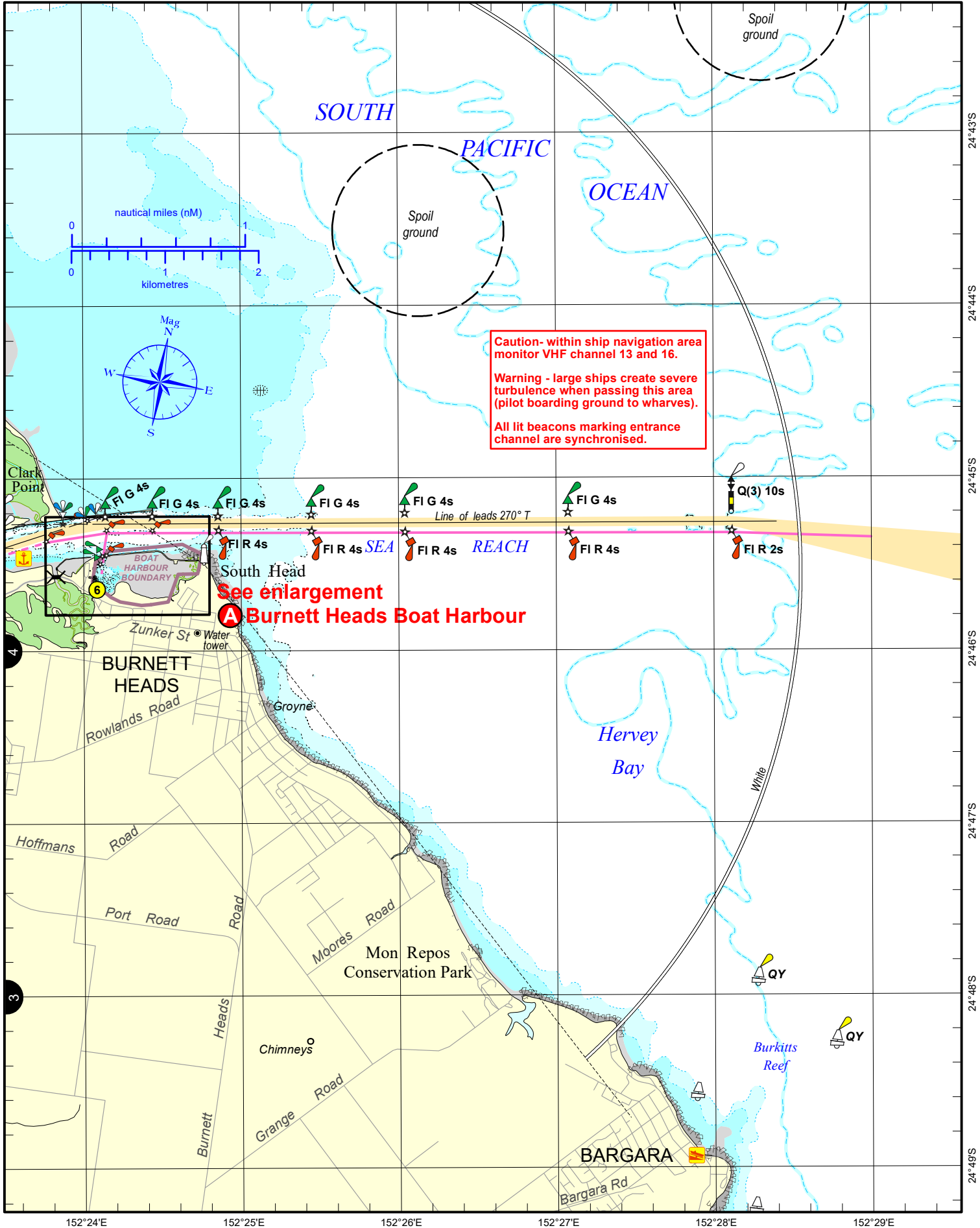


Always keep a proper lookout when boating. Exercise care at all times.  
 Look up and live for power and cable crossings that may not be shown on these maps due to scale or recent construction.  
**CAUTION:** For depth contour date information, refer to the Key Sheet for this guide.  
 Note that depths may change following floods.  
 Exercise care when travelling outside suggested navigation tracks.

© Copyright The State of Queensland 2023  
 Queensland Department of Transport and Main Roads - Maritime Safety Queensland.  
 To reproduce any map within this series, see terms and conditions at Maritime Safety Queensland's website ([www.msq.qld.gov.au](http://www.msq.qld.gov.au))

Nautical information current to 31 May 2023

Queensland Government

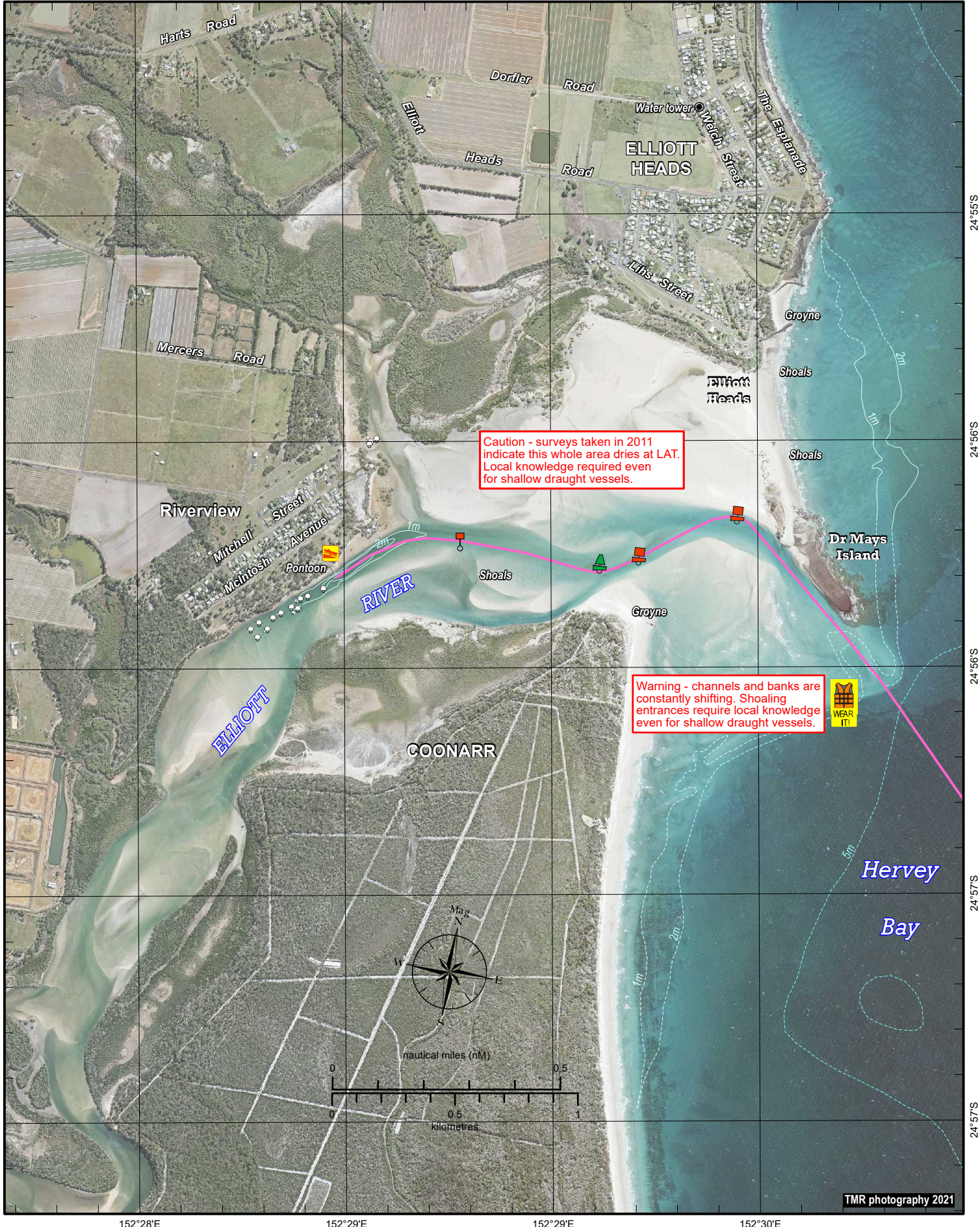


**Caution - within ship navigation area monitor VHF channel 13 and 16.**

**Warning - large ships create severe turbulence when passing this area (pilot boarding ground to wharves).**

**All lit beacons marking entrance channel are synchronised.**

**See enlargement**  
**Burnett Heads Boat Harbour**



Always keep a proper lookout when boating. Exercise care at all times.

Look up and live for power and cable crossings that may not be shown on these maps due to scale or recent construction.

**CAUTION:** Limited or no depth contour data is available for these waters. (Refer to the Key Sheet for this guide to determine date of survey information).

The latest air photo imagery (captured during 2021) is shown only as a guide. Sandbank visibility depends on the height of tide at time of image capture.

Exercise care when travelling outside suggested navigation tracks.

© Copyright The State of Queensland 2023

Queensland Department of Transport and Main Roads - Maritime Safety Queensland.

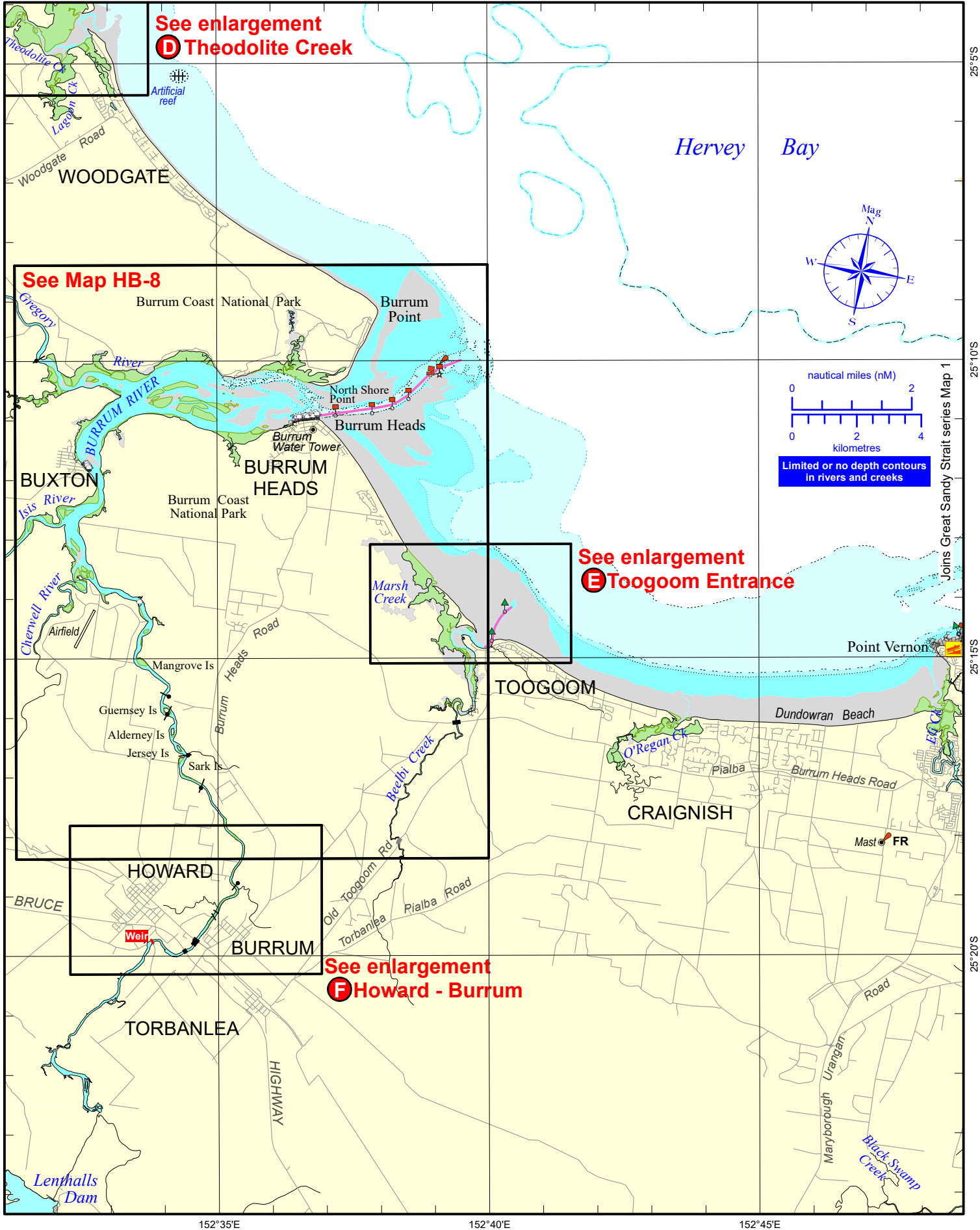
To reproduce any map within this series, see terms and conditions at Maritime Safety Queensland's website ([www.msq.qld.gov.au](http://www.msq.qld.gov.au))

Nautical information current to 31 May 2023



Queensland Government



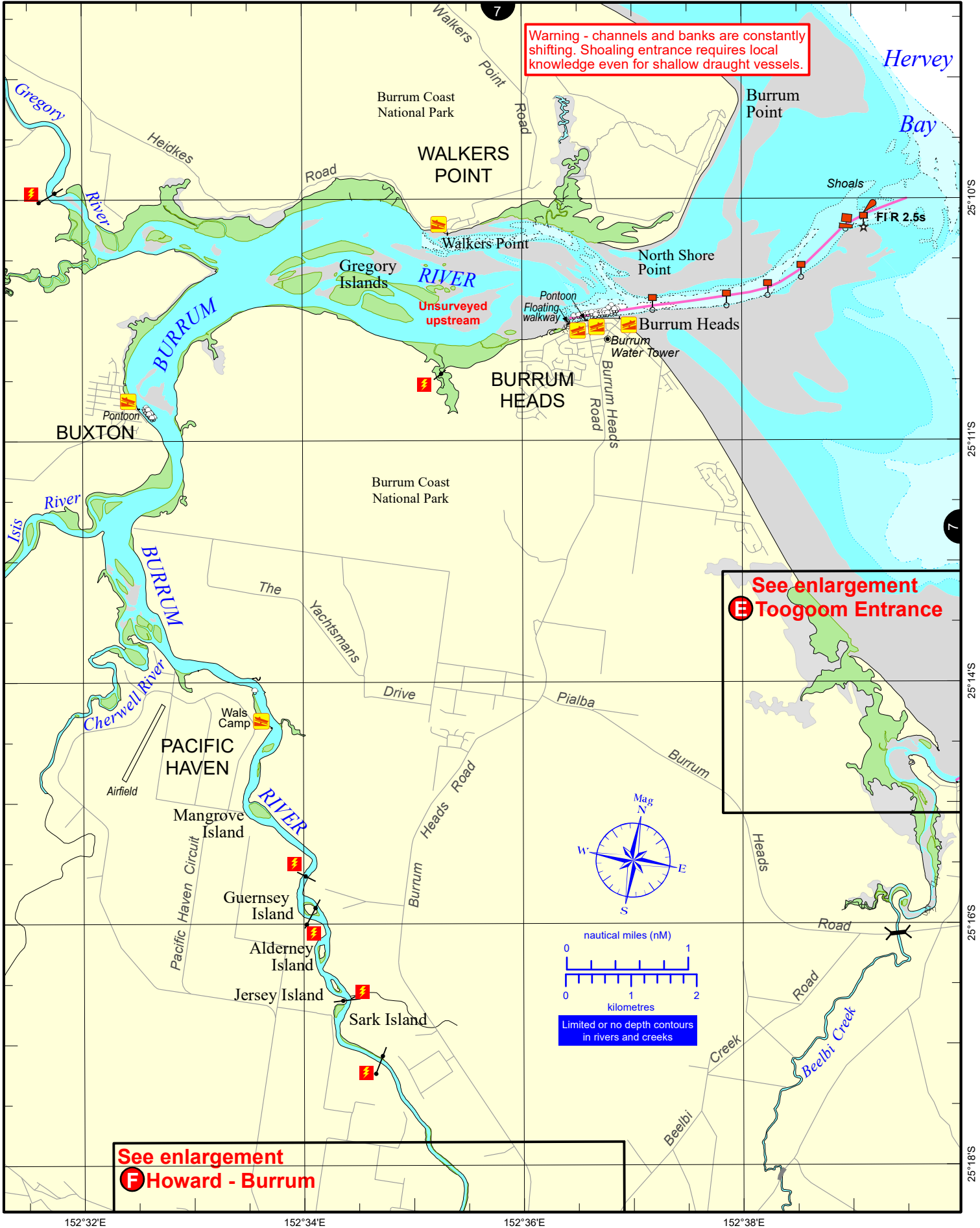


**Always keep a proper lookout when boating. Exercise care at all times.**  
 Look up and live for power and cable crossings that may not be shown on these maps due to scale or recent construction.  
**CAUTION:** Limited depth contour data is available for part of these waters. (Refer to the Key Sheet for this guide to determine date of survey information).  
 Note that depths may change following floods.  
**Exercise care when travelling outside suggested navigation tracks.**  
 © Copyright The State of Queensland 2023  
 Queensland Department of Transport and Main Roads - Maritime Safety Queensland.  
 To reproduce any map within this series, see terms and conditions at Maritime Safety Queensland's website ([www.msq.qld.gov.au](http://www.msq.qld.gov.au))

Nautical information current to 31 May 2023

**Queensland Government**

VMR Hervey Bay: base phone 4128 9666, 7 days 0600-1800, 27MHz 88 91, VHF 16 67 22 73.



Always keep a proper lookout when boating. Exercise care at all times.  
 Look up and live for power and cable crossings that may not be shown on these maps due to scale or recent construction.  
**CAUTION:** Limited depth contour data is available for part of these waters. (Refer to the Key Sheet for this guide to determine date of survey information).  
 Note that depths may change following floods.  
 Exercise care when travelling outside suggested navigation tracks.

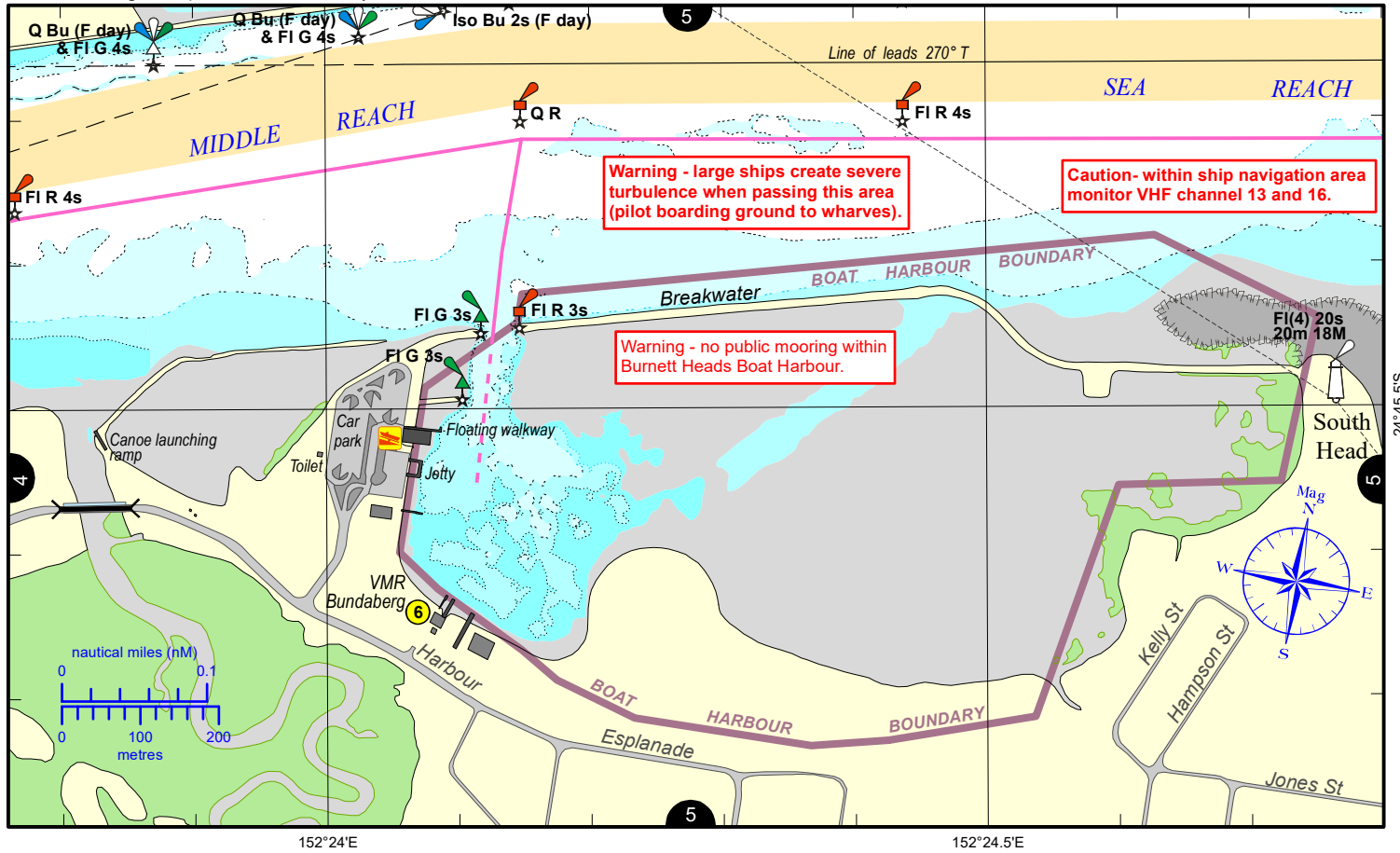
© Copyright The State of Queensland 2023  
 Queensland Department of Transport and Main Roads - Maritime Safety Queensland.  
 To reproduce any map within this series, see terms and conditions at Maritime Safety Queensland's website ([www.msq.qld.gov.au](http://www.msq.qld.gov.au))

Nautical information current to 31 May 2023

Queensland Government

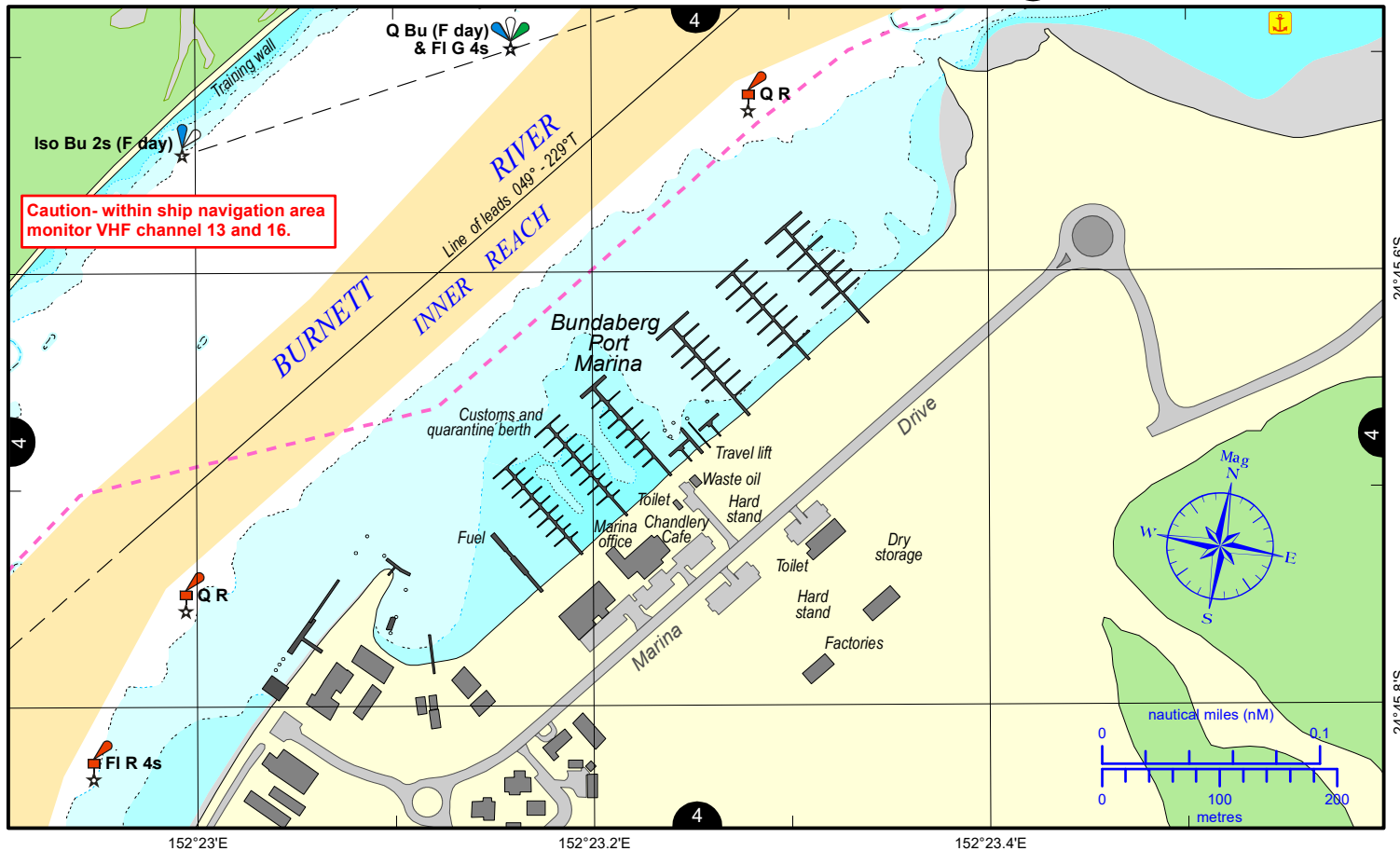
VMR Bundaberg: base phone 4159 4349, 7 days 0600-1800, 27MHz 88, VHF 81 22 80 16 67, MF/HF 2524 4125.

## A Burnett Heads Boat Harbour



VMR Bundaberg: base phone 4159 4349, 7 days 0600-1800, 27MHz 88, VHF 81 22 80 16 67, MF/HF 2524 4125.

## B Bundaberg Port Marina



Always keep a proper lookout when boating. Exercise care at all times.

Look up and live for power and cable crossings that may not be shown on these maps due to scale or recent construction.

**CAUTION:** For depth contour date information, refer to the Key Sheet for this guide.

Note that depths may change following floods.

Exercise care when travelling outside suggested navigation tracks.

© Copyright The State of Queensland 2023

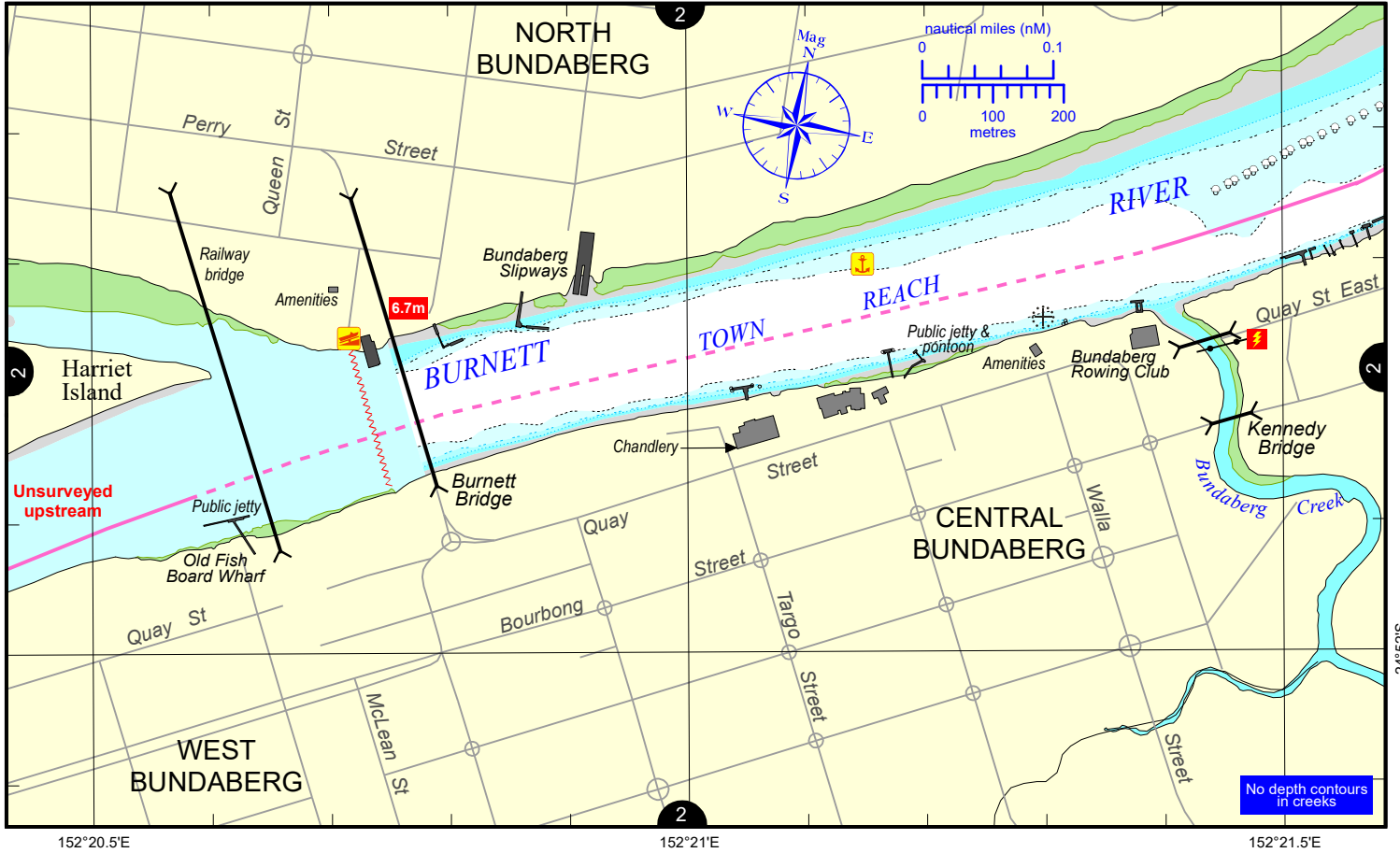
Queensland Department of Transport and Main Roads - Maritime Safety Queensland.

To reproduce any map within this series, see terms and conditions at Maritime Safety Queensland's website ([www.msq.qld.gov.au](http://www.msq.qld.gov.au))

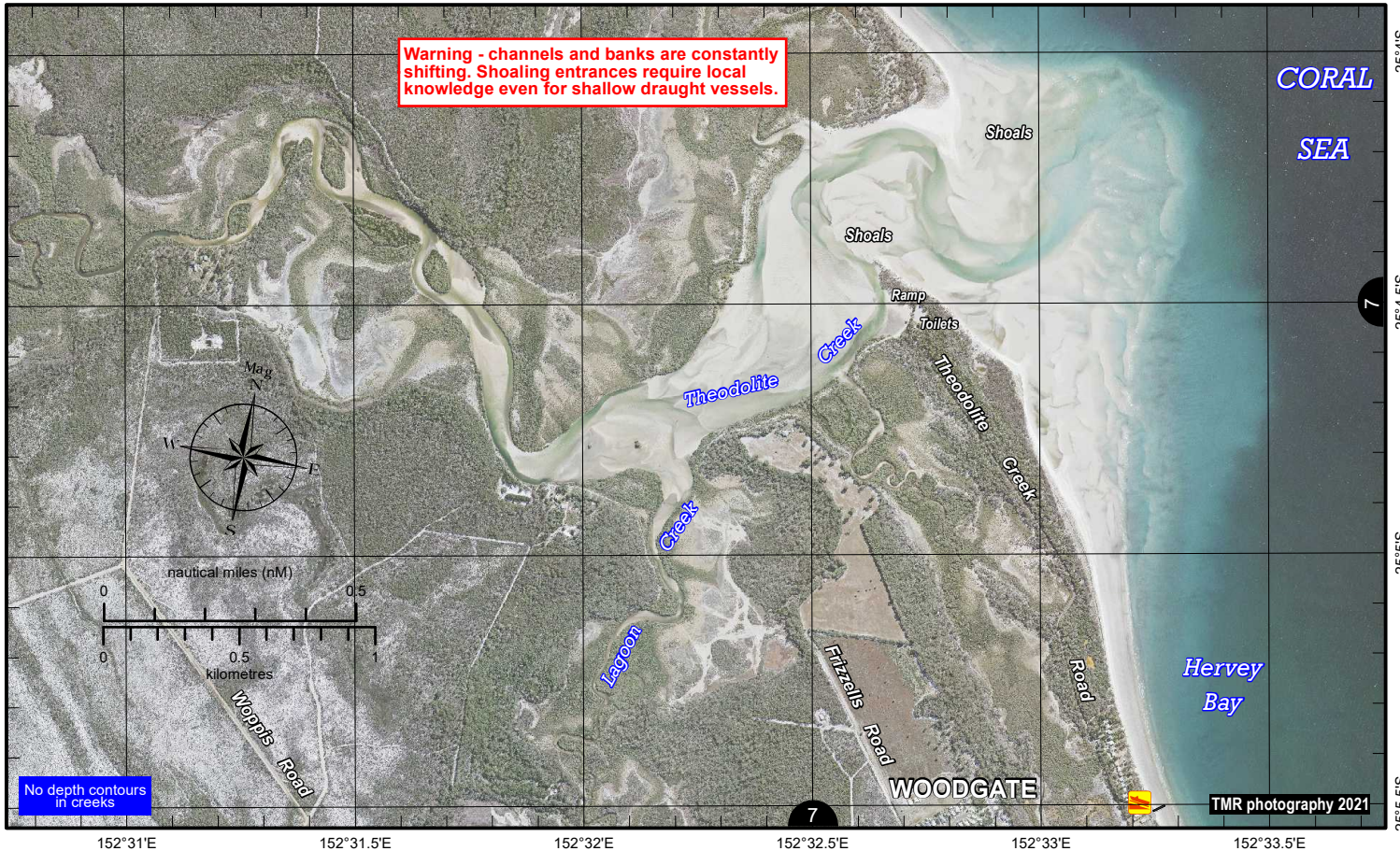
Nautical information current to 31 May 2023



VMR Bundaberg: base phone 4159 4349, 7 days 0600-1800, 27MHz 88, VHF 81 22 80 16 67, MF/HF 2524 4125.



VMR Bundaberg: base phone 4159 4349, 7 days 0600-1800, 27MHz 88, VHF 81 22 80 16 67, MF/HF 2524 4125.



Always keep a proper lookout when boating. Exercise care at all times.

Look up and live for power and cable crossings that may not be shown on these maps due to scale or recent construction.

**CAUTION:** Limited or no depth contour data is available for part of these waters. (Refer to the Key Sheet for this guide to determine date of survey information).

The latest air photo imagery (captured during 2021) is shown only as a guide. Sandbank visibility depends on the height of tide at time of image capture.

Exercise care when travelling outside suggested navigation tracks.

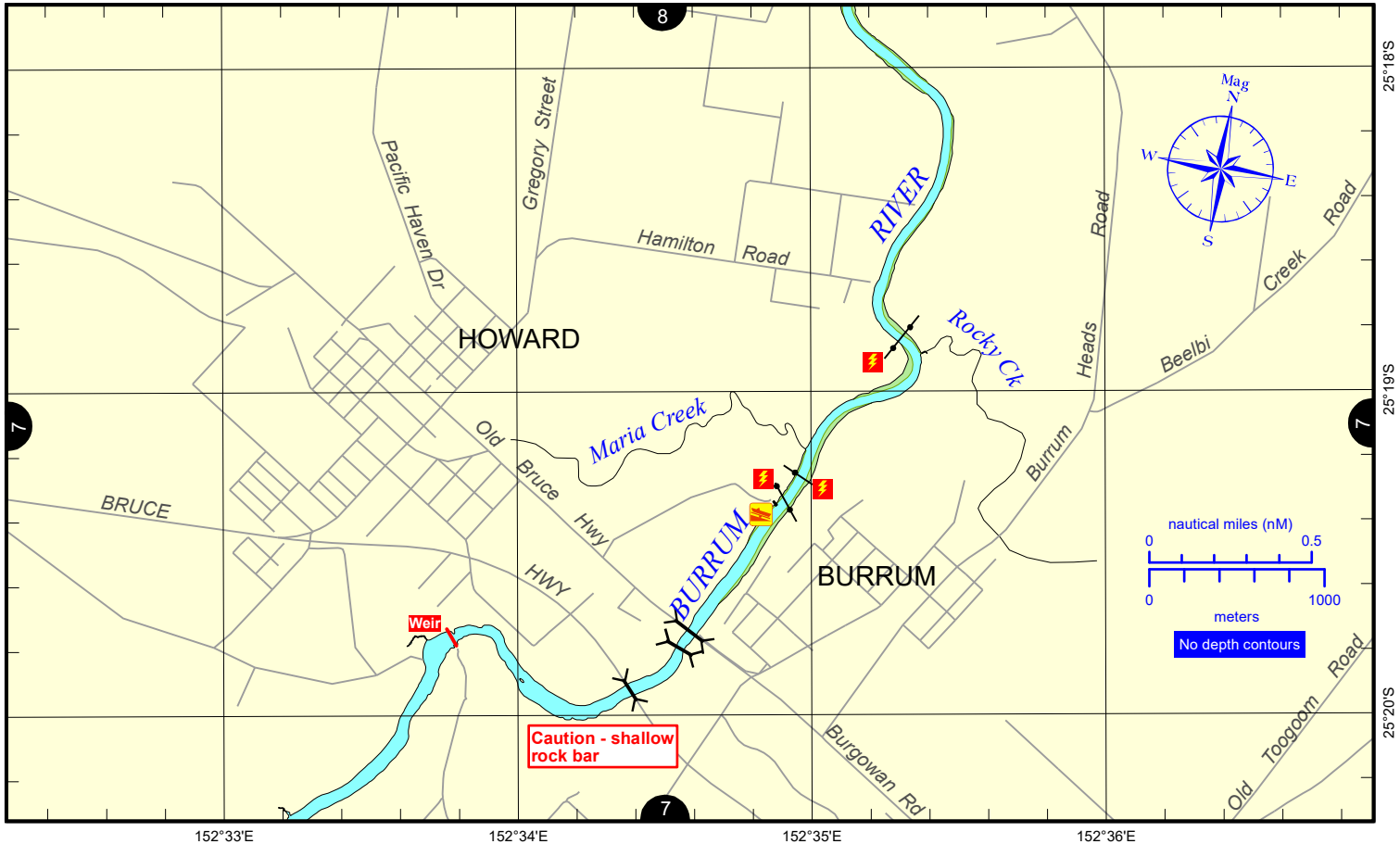
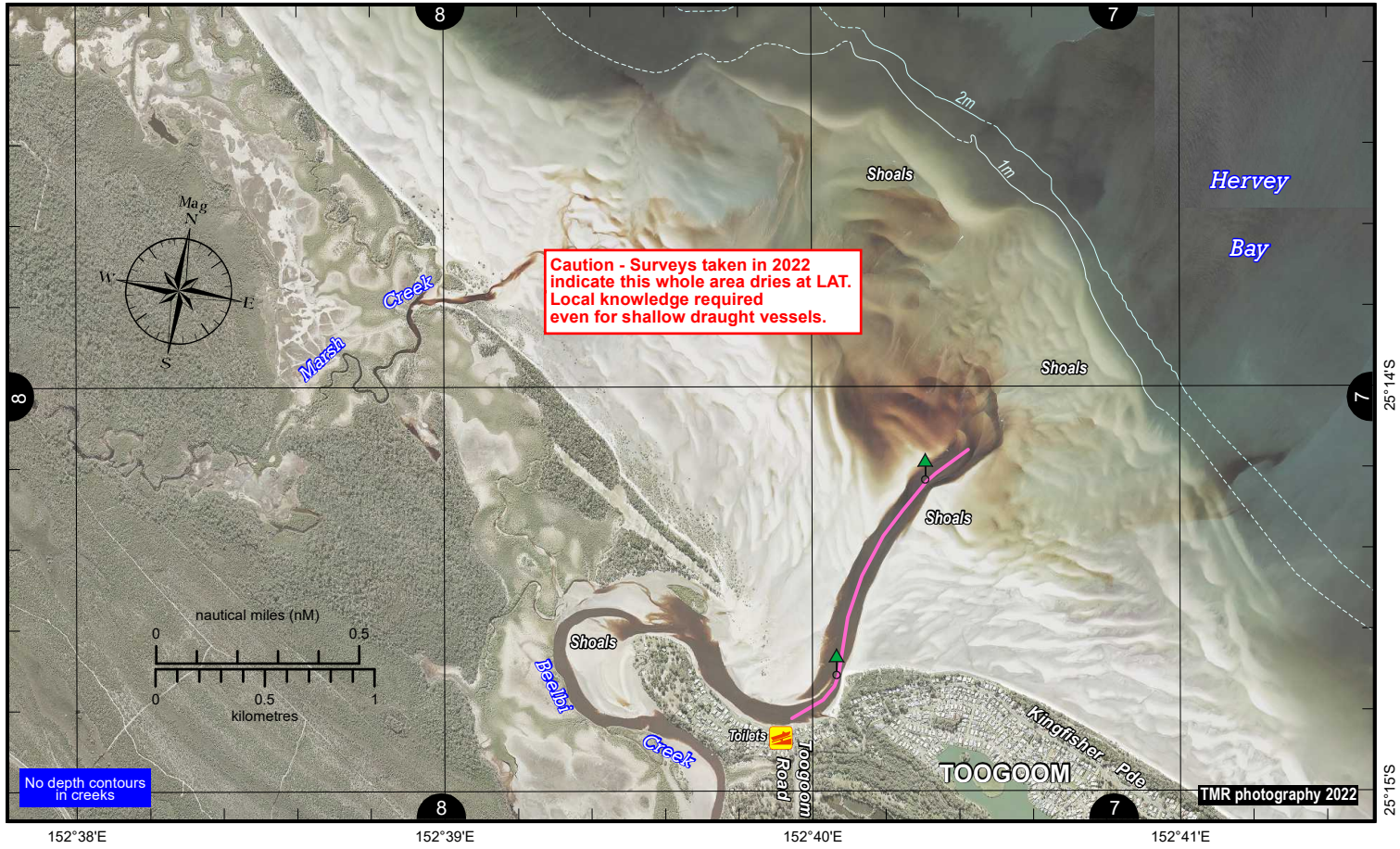
© Copyright The State of Queensland 2023

Queensland Department of Transport and Main Roads - Maritime Safety Queensland.

To reproduce any map within this series, see terms and conditions at Maritime Safety Queensland's website ([www.msq.qld.gov.au](http://www.msq.qld.gov.au))

Nautical information current to 31 May 2023





Always keep a proper lookout when boating. Exercise care at all times.

Look up and live for power and cable crossings that may not be shown on these maps due to scale or recent construction.

**CAUTION:** Limited or no depth contour data is available for these waters. (Refer to the Key Sheet for this guide to determine date of survey information).

The latest air photo imagery (captured during 2022) is shown only as a guide. Sandbank visibility depends on the height of tide at time of image capture.

Exercise care when travelling outside suggested navigation tracks.

© Copyright The State of Queensland 2023

Queensland Department of Transport and Main Roads - Maritime Safety Queensland.

To reproduce any map within this series, see terms and conditions at Maritime Safety Queensland's website ([www.msq.qld.gov.au](http://www.msq.qld.gov.au))

Nautical information current to 31 May 2023

